

INFRASTRUCTURE GROUP

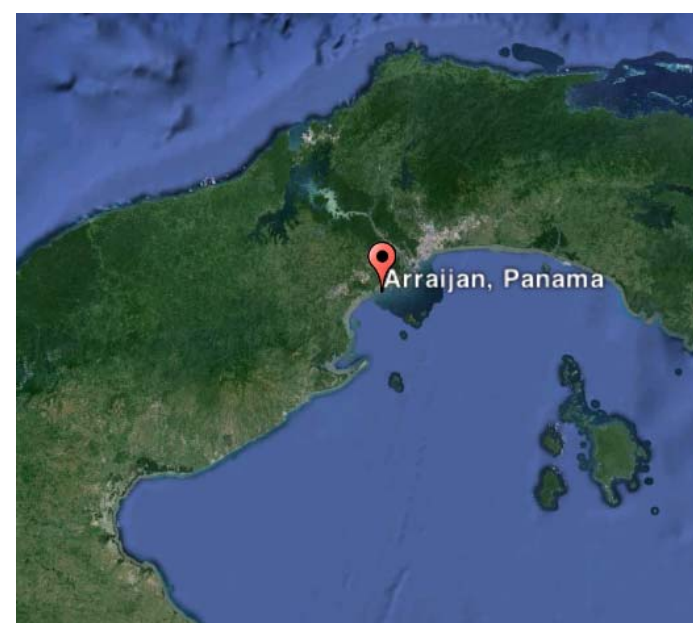
ARRAIJÁN BRIDGE PROJECT

Russell Woleslagle, Laura Castilow

Introduction

The Bridge Project seeks to provide pedestrian bridges that empower the poor and meet basic needs within communities. The Bridge Project team will empower the poor by providing safe access to essential life resources.

The first community that we are empowering is located in Arraiján, Panama. The need in this location was identified on an AROMA mission trip to Panama in August of 2013.



In this community, the pastor, pictured above, provides food and water for the community that they otherwise would not have. The bridge will allow the people of Arraiján to access this food and water year round. According to a study that was done on the site by engineers without borders, this ravine is also crossed by around 100 students on their way to school. This bridge will provide safe and reliable access to food, water, and education.

We are providing the designs for the Bridge to Rio Missions who will be responsible for construction over this summer.

Clients

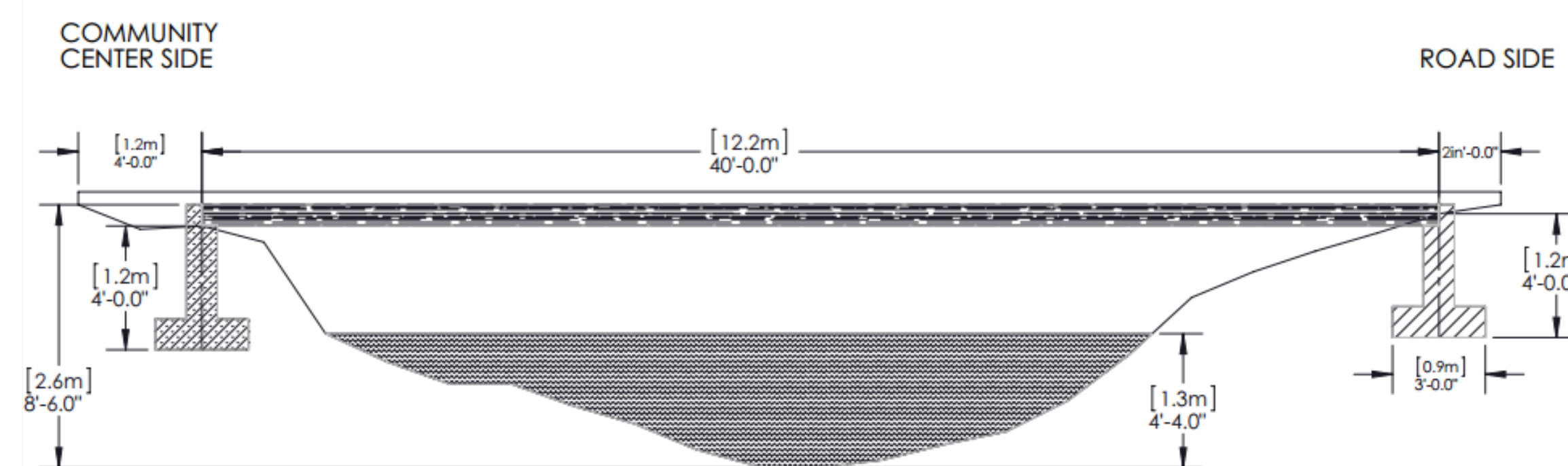
Dan Cotton

Dan is a Messiah Alumni and the director of Rio Missions, a mission organization in Panama. He helped us identify the need and is funding construction. Our team is also welcomed to stay in his mission base during our time in Panama.

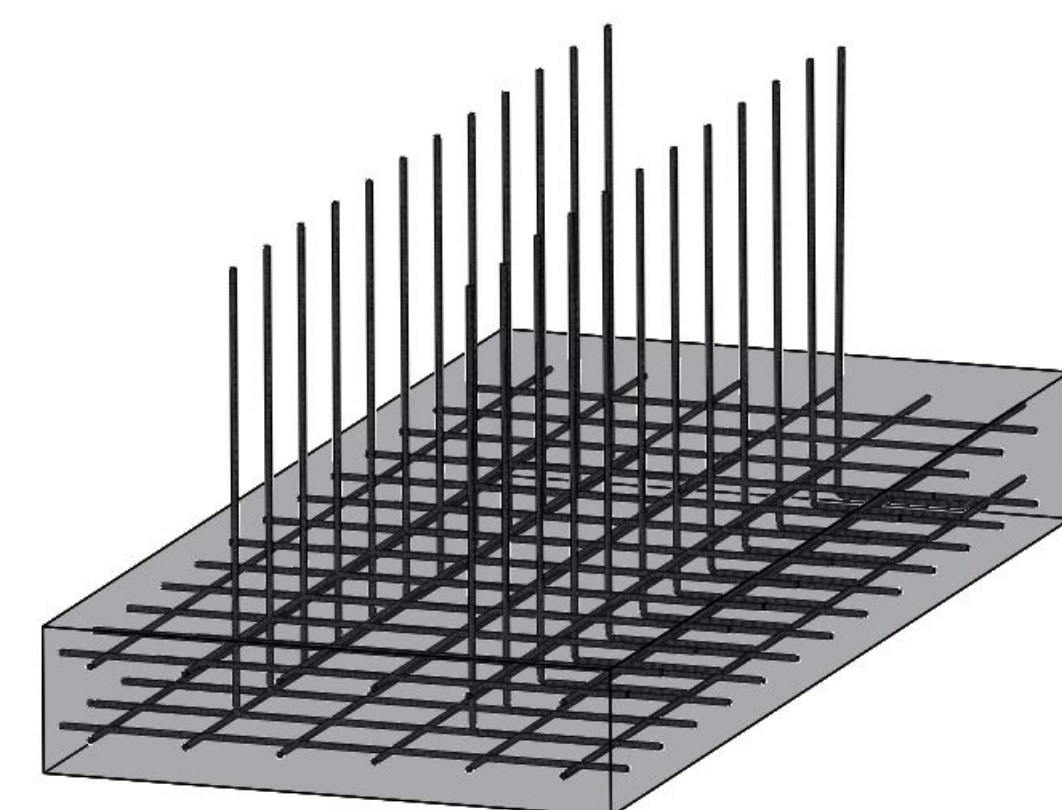
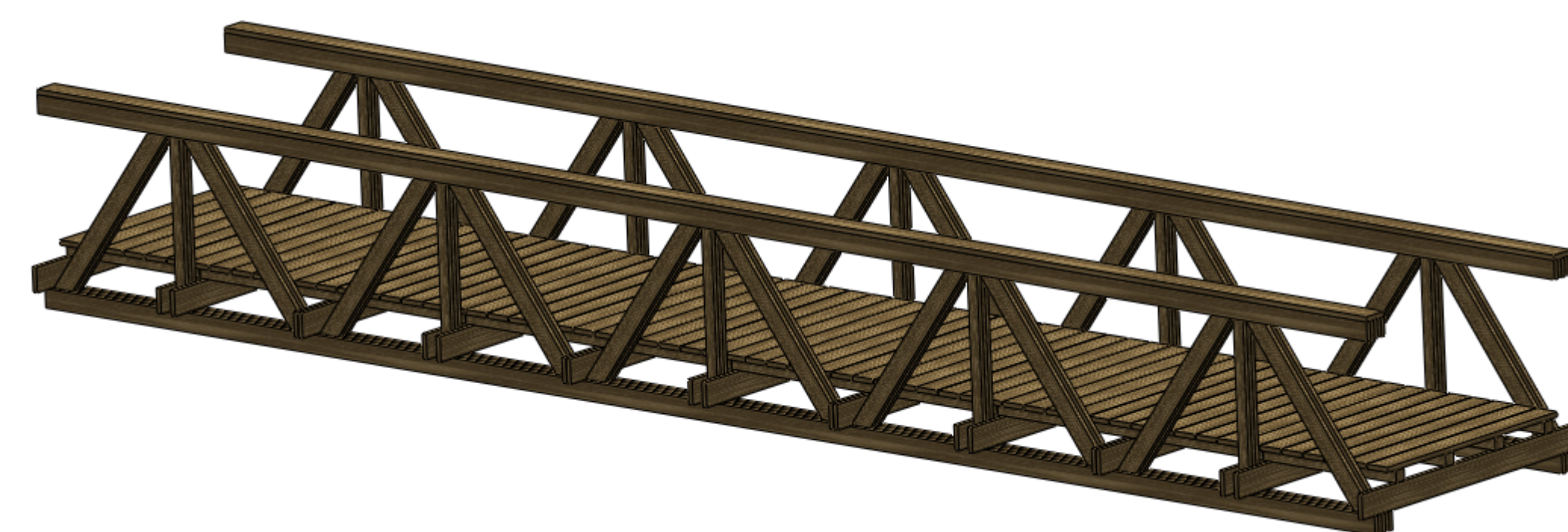


Results

Below is the bridge profile for our site. The information for this profile was provided by a site survey conducted by a group of Messiah College Students who travelled to Panama over spring break of this year.



Below is a 3-D rendering of the Bridge:



To the right is a 3-D rendering of the bridge footers. The footers will be poured this week.

The Site at Arraiján



Conclusions

- We are helping communities in need that would otherwise not be reached.
- The bridge in Arraiján, Panama will be constructed this summer!

Further Information

www.collabbridges.blogspot.com

