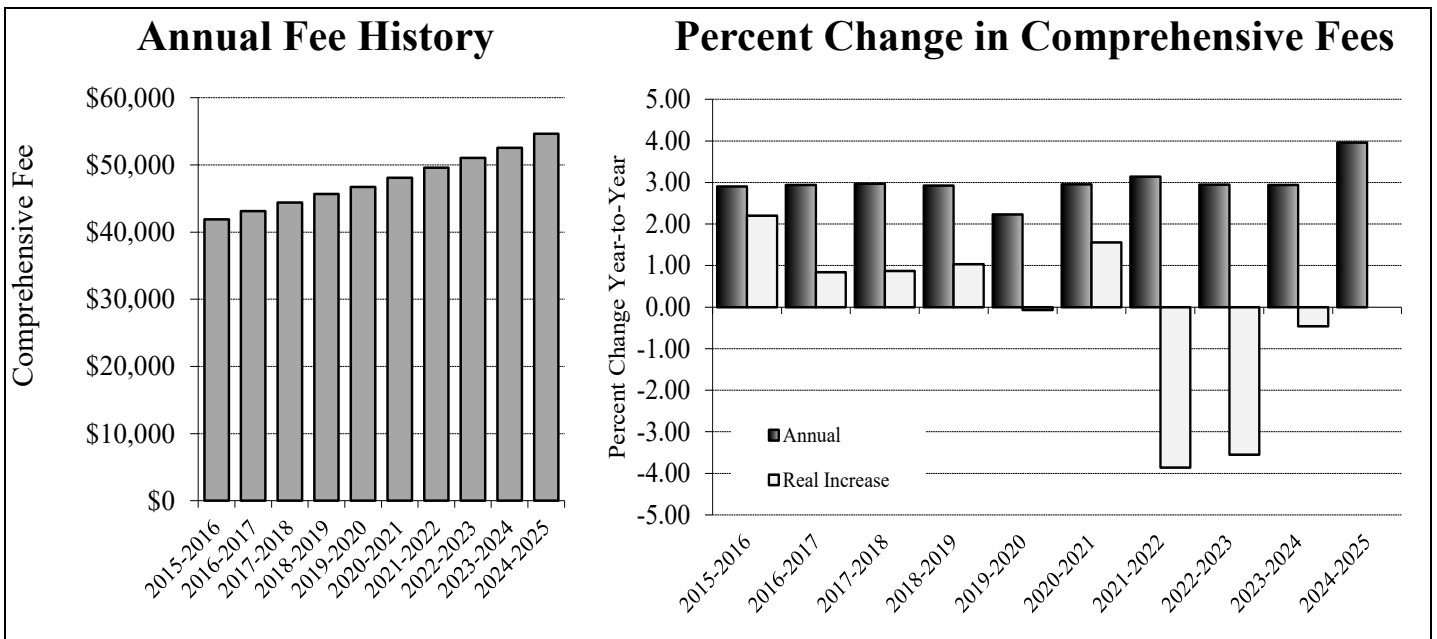


Undergraduate Semester Fees

	2015-16	% Incr.	2016-17	% Incr.	2017-18	% Incr.	2018-19	% Incr.	2019-20	% Incr.
Tuition	\$15,705	2.95%	\$16,175	2.99%	\$16,660	3.00%	\$17,160	3.00%	\$17,640	2.80%
Housing	\$2,550	3.03%	\$2,625	2.94%	\$2,705	3.05%	\$2,785	2.96%	\$2,815	1.08%
Food	\$2,265	2.95%	\$2,335	3.09%	\$2,405	3.00%	\$2,475	2.91%	\$2,475	0.00%
Fees	\$415	0.00%	\$415	0.00%	\$420	1.20%	\$420	0.00%	\$420	0.00%
Total	\$20,935	2.90%	\$21,550	2.94%	\$22,190	2.97%	\$22,840	2.93%	\$23,350	2.23%
Annual	\$41,870	2.90%	\$43,100	2.94%	\$44,380	2.97%	\$45,680	2.93%	\$46,700	2.23%
CPI Incr.	0.7%		2.1%		2.1%		1.9%		2.3%	
Real Incr.		2.20%		0.84%		0.87%		1.03%		-0.07%

	2020-21	% Incr.	2021-22	% Incr.	2022-23	% Incr.	2023-24	% Incr.	2024-25	% Incr.
Tuition	\$18,170	3.00%	\$18,715	3.00%	\$19,275	2.99%	\$19,850	2.98%	\$20,650	4.03%
Housing	\$2,900	3.02%	\$2,985	2.93%	\$3,075	3.02%	\$3,167	2.99%	\$3,295	4.04%
Food	\$2,550	3.03%	\$2,625	2.94%	\$2,705	3.05%	\$2,788	3.07%	\$2,900	4.02%
Fees	\$420	0.00%	\$470	11.90%	\$470	0.00%	\$470	0.00%	\$470	0.00%
Total	\$24,040	2.96%	\$24,795	3.14%	\$25,525	2.94%	\$26,275	2.94%	\$27,315	3.96%
Annual	\$48,080	2.96%	\$49,590	3.14%	\$51,050	2.94%	\$52,550	2.94%	\$54,630	3.96%
CPI Incr.	1.4%		7.0%		6.5%		3.4%			
Real Incr.		1.56%		-3.86%		-3.56%		-0.46%		



Sources: Semester Fees Sheet, Consumer Price Index (CPI): Bureau of Labor Statistics