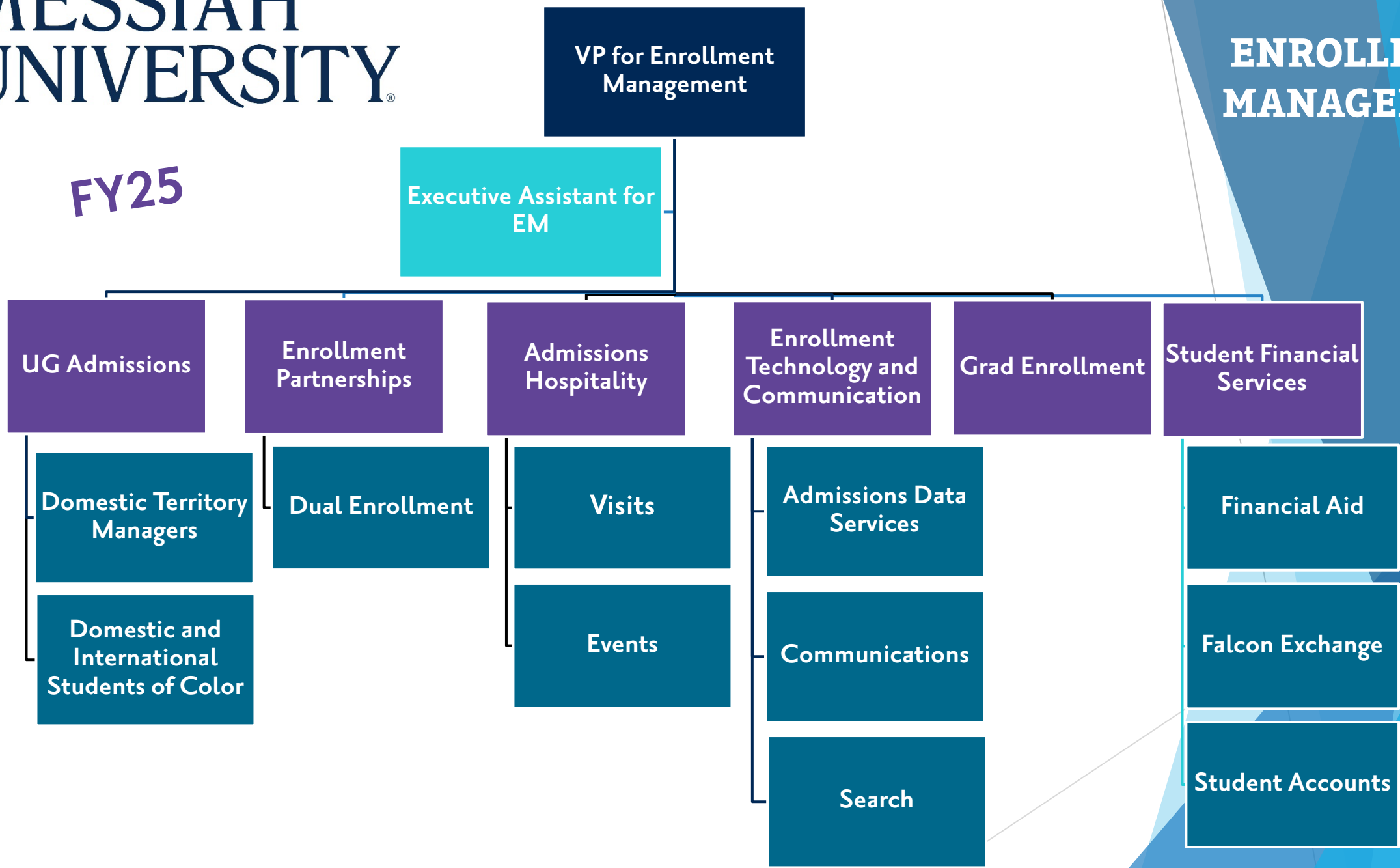


FY25



**John Chopka**

VP for Enrollment  
Management

**Leslie Bencivenga**

Executive Assistant for  
Enrollment Management

**Matt  
Reitnour**

Director of  
Enrollment  
Partnerships

**Shayna Mark**

Director of  
UG  
Admissions

**Kristin  
Thomas**

Director of  
Admissions  
Hospitality

**Greg  
Gearhart**

Financial Aid  
Compliance  
Officer

**Bethany  
Parliament-  
Chevalier**

Director of  
Enrollment  
Technology and  
Communication

**Sarah Wade**

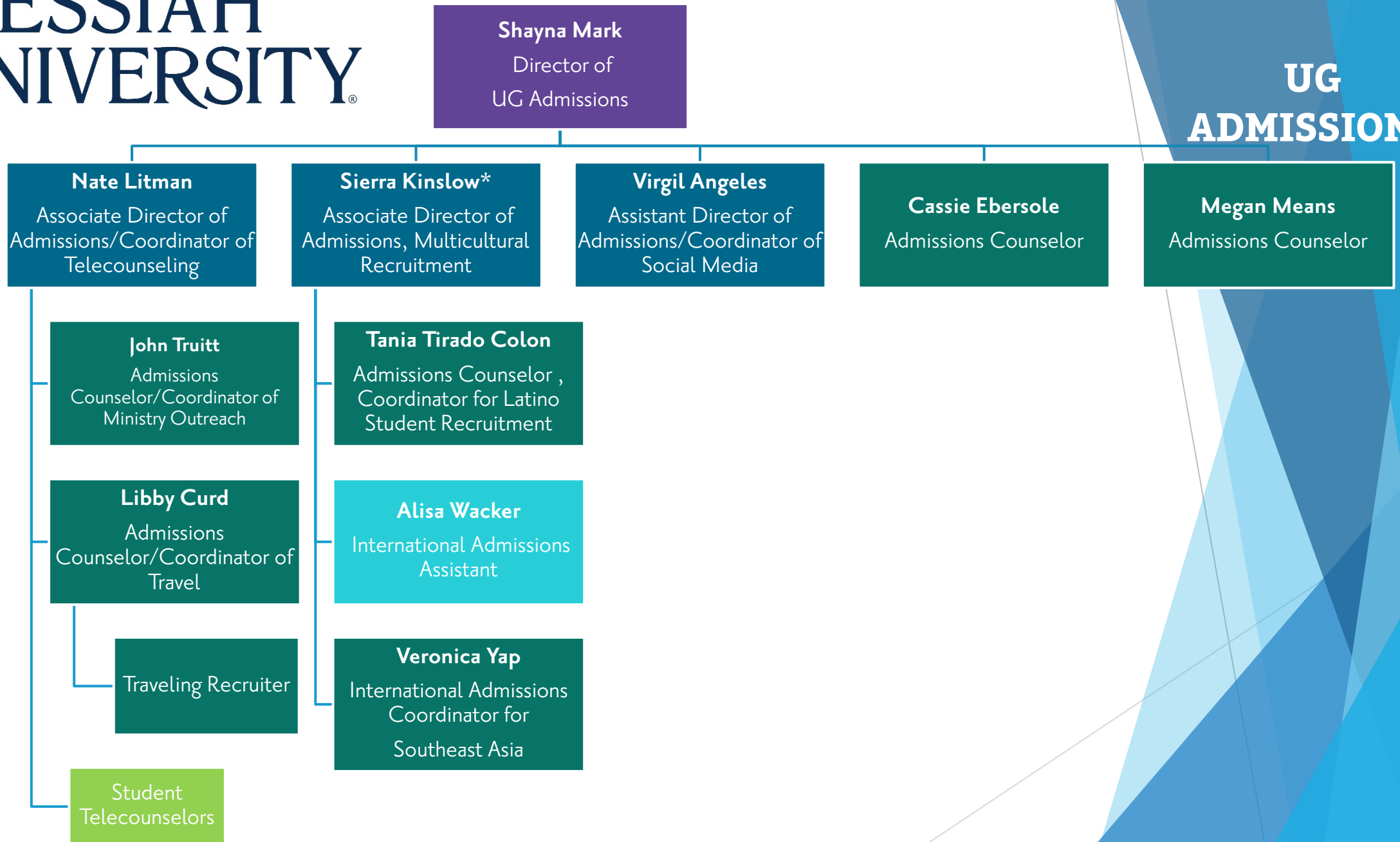
Director of  
Enrollment,  
SGPS

**JR Harris**

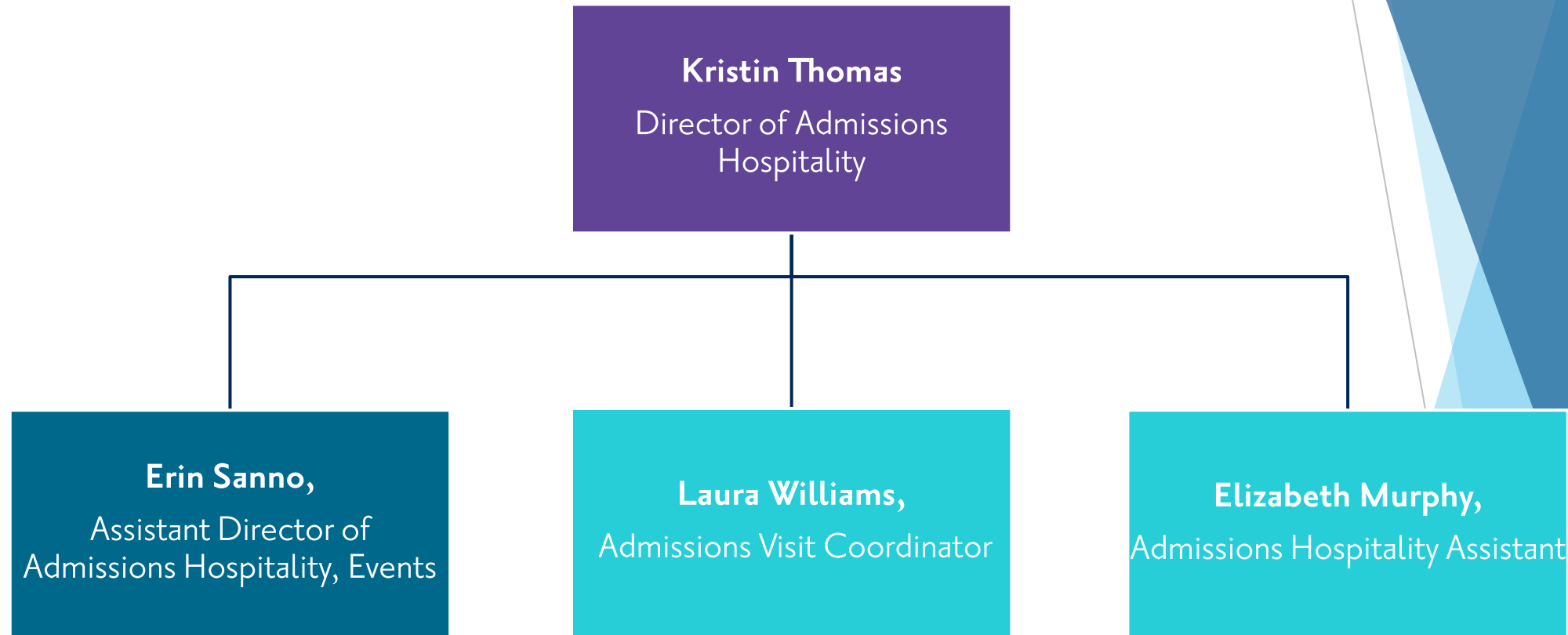
Executive  
Director of  
Student  
Financial  
Services

**Rusty  
Hoffman**

Associate Director  
of Admissions,  
Transfer Enrollment



*\*Sierra will maintain a dotted line to John for matters directly related to multicultural and international recruitment*

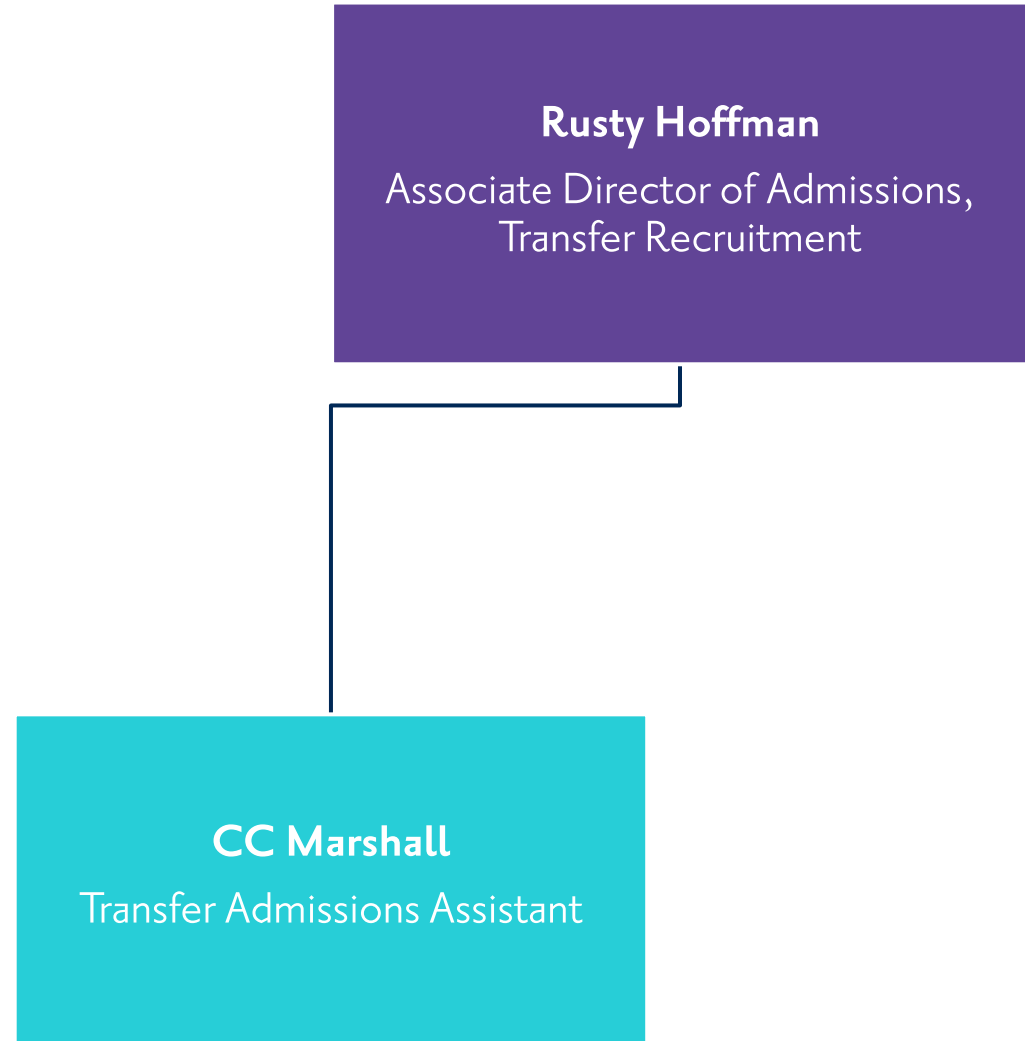


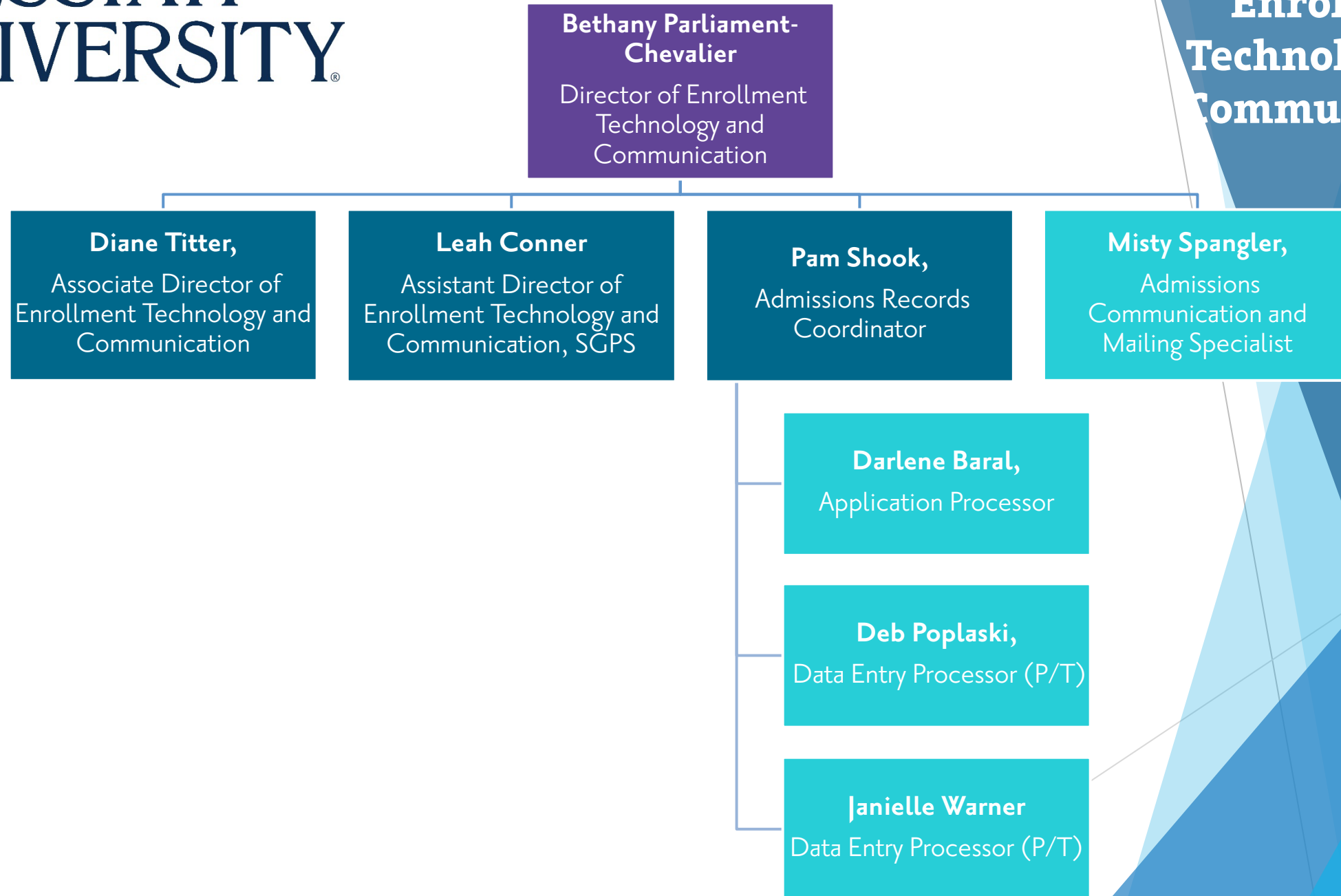
**Rusty Hoffman**

Associate Director of Admissions,  
Transfer Recruitment

**CC Marshall**

Transfer Admissions Assistant





**Sarah Wade**

Director of Enrollment,  
SGPS

**Leah Smock,**

Associate Director of  
Graduate Enrollment

**Carly Rippeon,**

Assistant Director of  
Graduate Enrollment

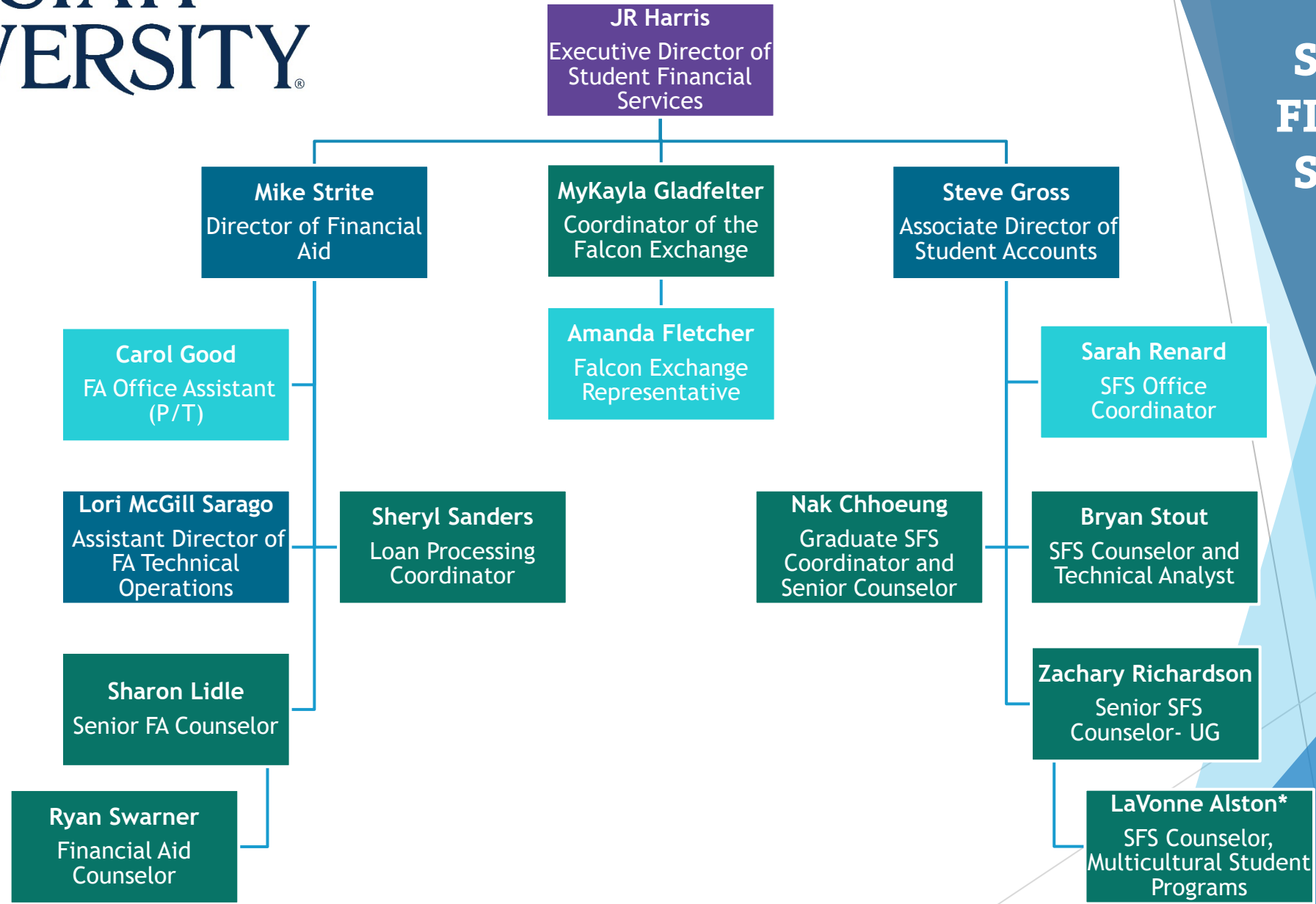
**Julia Varela**

Assistant Director of  
Graduate Enrollment

**Sarah Darr**

Graduate Enrollment and  
Communication  
Specialist

## STUDENT FINANCIAL SERVICES



\*LaVonne is split 75/25 with SFS and MSP