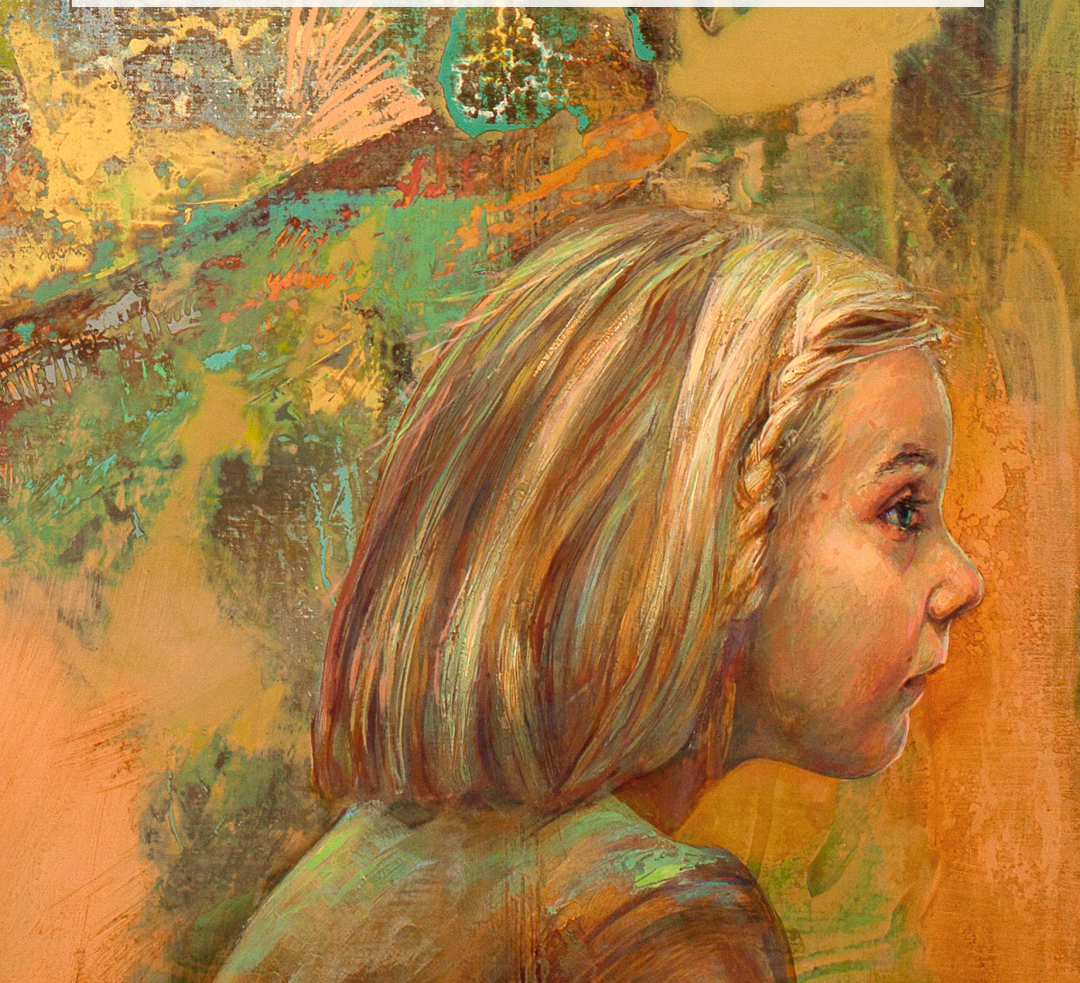


Ordinary Saints

Bruce Herman | Malcolm Guite | J.A.C. Redford

Messiah University
Friday, September 8th at 4:30pm

Calvin and Janet High Center for Worship
and Performing Arts, Parmer Hall



Ordinary Saints

*The ordinary saints, the ones we know,
Our too-familiar family and friends,
When shall we see them? Who can truly show
Whilst still rough-hewn, the God who shapes our ends?
Who will unveil the presence, glimpse the gold
That is and always was our common ground,
Stretch out a finger, feel, along the fold
To find the flaw, to touch and search that wound
From which the light we never noticed fell
Into our lives? Remember how we turned
To look at them, and they looked back? That full-
-eyed love unselved us, and we turned around,
Unready for the wrench and reach of grace.
But one day we will see them face to face.*

-Malcolm Guite

 MESSIAH
UNIVERSITY

*Department of Art and Design
& Department of Music present:*

Ordinary Saints

Bruce Herman | Malcolm Guite | J.A.C. Redford

*A multidisciplinary collaboration
of painting, poetry, and music*

Friday, September 8th at 4:30pm
Calvin and Janet High Center for Worship
and Performing Arts, Parmer Hall

*Reception to follow at the Aughinbaugh Art Gallery
to inaugurate the solo exhibition*

BODY, BEAUTY, BROKENNESS

Bruce Herman

Aughinbaugh Art Gallery
Climenhaga Building
September 8th - October 8th, 2023

Program

Light We Never Noticed.....J.A.C. Redford
Chamber Ensemble

Ordinary Saints.....Malcolm Guite
Poem

Ordinary Saints.....J.A.C. Redford
Chamber Ensemble

Summoning Beauty....J.A.C. Redford, Malcolm Guite
Chamber Ensemble, Poem

Portrait of the Artist's Father.....Malcolm Guite
Poem

Here Is Your Father.....J.A.C. Redford
Piano Trio

Portrait of the Artist's Mother.....Malcolm Guite
Poem

Red Over Gold.....J.A.C. Redford
Chamber Ensemble

A Portrait of Meg.....Malcolm Guite
Poem

A Portrait of Ben.....Malcolm Guite
Poem

Sarah.....Malcolm Guite
Poem

Firefly.....Malcolm Guite
Poem

Firefly.....J.A.C. Redford
Chamber Ensemble

Portrait of the Shaw Family.....Malcolm Guite
Poem

A Shared Motif.....J.A.C. Redford
Chamber Ensemble

Ordinary Saints Epilogue.....Malcolm Guite
Poem

Ordinary Saints Epilogue.....J.A.C. Redford
Chamber Ensemble

Chamber Ensemble

Tara Savarino, *Soprano*
Richard Roberson, *Piano*
Stephanie Cramer, *Clarinet*
Alison Koch, *Cello*

Poetry Readings

Malcolm Guite



Portrait of the Artist (detail) ©Bruce Herman, 2012
oil linen; 48" X 36"

Bruce Herman

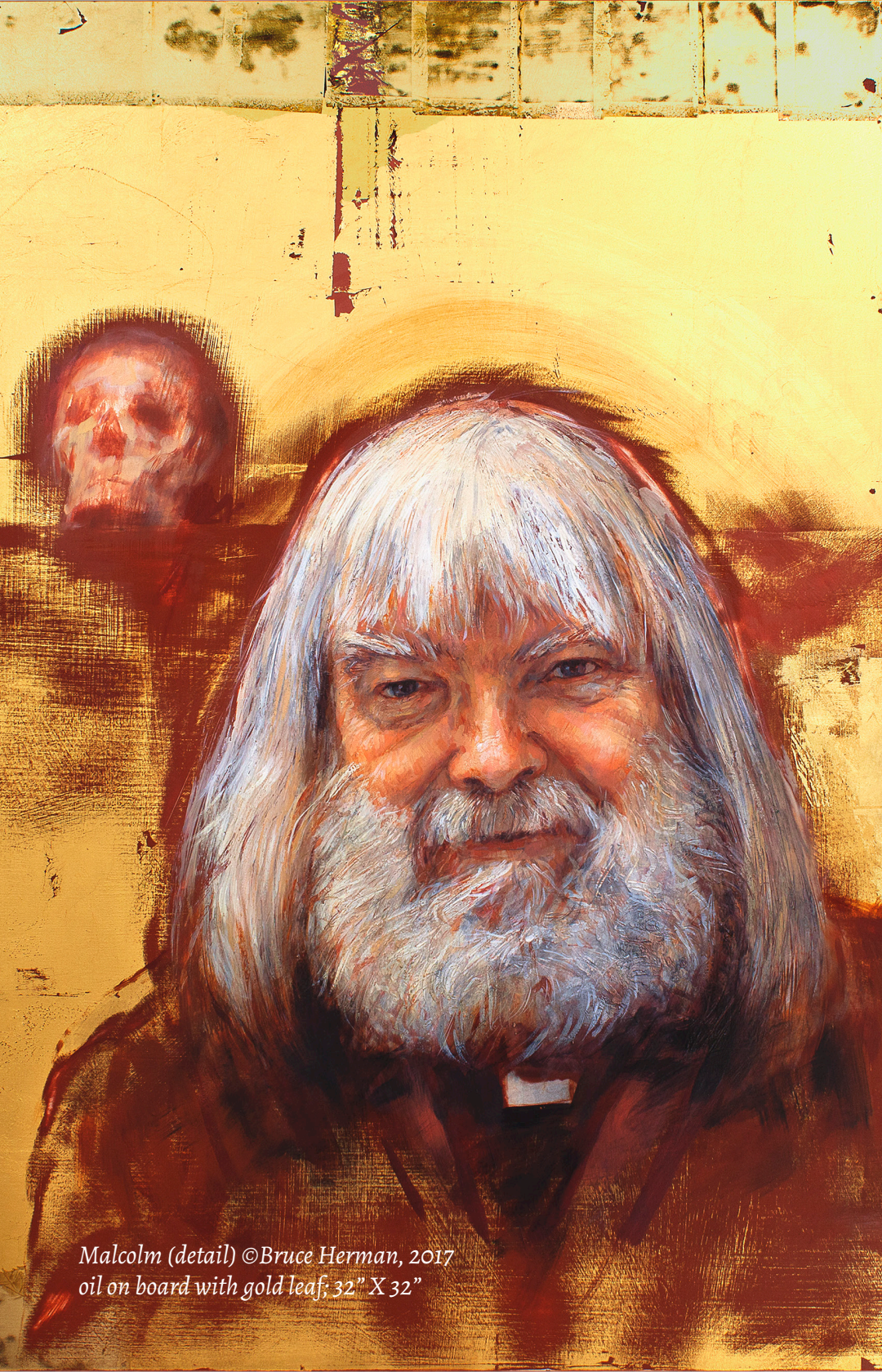
Herman's art has been shown in more than 150 exhibitions--nationally in a dozen US cities, including New York, Boston, Washington, Chicago, and Los Angeles and internationally in Canada, Italy, England, Japan, Hong Kong, and Israel. His artwork is featured in many public and private art collections including Hammer Museum, Los Angeles; Cincinnati Museum of Fine Arts; De Cordova Museum, Boston; Cape Ann Museum; the Vatican Museums in Rome; and in many colleges and universities throughout the US and Canada.

Herman completed his MFA degrees at Boston University College of Fine Arts under American artists Philip Guston and James Weeks. He completed the BFA under David Aronson, Reed Kay, and Arthur Polonsky, also at BU. He was named Boston University College of Fine Arts Distinguished Alumnus of the Year 2006.

Herman's art is widely published in books, journals, popular magazines, newspapers, and online art features.

*"...Where light and shade, informing one another,
Call forth the forms that haunt his staring eyes;
Beauties from which not one of us recover..."*

- A Portrait of the Artist, Malcolm Guite



Malcolm (detail) ©Bruce Herman, 2017
oil on board with gold leaf; 32" X 32"

Malcolm Guite

Ayodeji Malcolm Guite (pronounced [gait](IPA)) (born 12 November 1957) is an English poet, singer-songwriter, Anglican priest, and academic. Born in Nigeria to British expatriate parents, Guite earned degrees from Cambridge and Durham universities. His research interests include the intersection of religion and the arts, and the examination of the works of J. R. R. Tolkien, C. S. Lewis, Owen Barfield, and British poets such as Samuel Taylor Coleridge. He is a Life Fellow of Girton College, Cambridge. On several occasions, he has taught as visiting faculty at several colleges and universities in England and North America.

Guite is the author of five Collections of poetry, as well as several books on literary criticism, Christian faith and theology. Guite has a decisively simple, formalist style in poems, many of which are sonnets. Guite performs as a singer and guitarist fronting the Cambridgeshire-based blues, rhythm and blues, and rock band "Mystery Train".

*"...This flat wood, covered with its squares of gold,
Through which my blurred reflection comes and goes,
Will one day hold my image; it will hold
The face I cannot see up to the world..."*

- Sitting for Bruce, Malcolm Guite

J.A.C. Redford

J.A.C. Redford is a composer, arranger, orchestrator and conductor of concert, chamber and choral music, film, television and theater scores, and music for recordings. Academy of St. Martin in the Fields, Joshua Bell, Chicago Symphony, Israel Philharmonic, Kansas City Chorale, Los Angeles Chamber Singers, Los Angeles Master Chorale, London Symphony Orchestra, Anne Akiko Meyers, New York Philharmonic, Phoenix Chorale, St. Martin's Chamber Choir, St. Paul Chamber Orchestra, Utah Chamber Artists and Utah Symphony have performed his work. The Alphabet of Revelation, Confessiones, Eternity Shut in a Span, Evening Wind, The Growing Season, Inside Passage, Let Beauty Be Our Memorial and Waltzing with Shadows are recordings devoted to his art music. He composed the Raymond W. Brock Memorial Commission for the American Choral Directors Association 2017 National Conference in Minneapolis, MN.

Redford's 500 episodes of television include multiple seasons of Coach and St. Elsewhere, for which he was twice nominated for Emmy Awards. He composed the scores for The Trip to Bountiful, Newsies and The Mighty Ducks II and III, conducted The Little Mermaid, and orchestrated the scores for Avatar, WALL-E, 1917, Finding Dory and Skyfall, for which he also arranged and conducted Adele's Oscar-winning title song.

*"...The colour of his sound is light on skin,
The light of kindness kindled in his eyes..."*


- A Portrait of JAC Redford, Malcolm Guite

*Jac (detail) ©Bruce Herman, 2017
oil on board with gold leaf; 32" X 32"*



MESSIAH
UNIVERSITY

AUGHINBAUGH
ART GALLERY



Firefly: Portrait of Mary Kathryn (detail) ©Bruce Herman, 2014
oil on linen; 48" X 36" oil on linen; 48" X 36"