

NOTES



CONTENTS

Frequently Asked Questions	2
South Complex	
Sollenberger	3
Mountain View	4
North Complex	
Grantham	5
Miller	5, 6
Hess	6
Apartments	
General Info	7
Credit Requirements	8
Mellinger	9
Smith	9
Fry	10
Kelly.....	10

IMPORTANT DATES

March 28 (Wed)	One-Bedroom Apartment Sign Ups in Eisenhower 207, the Residence Life Office
April 2nd & 3rd	Verification on The Nest for two-bedroom apartments
April 4 (Wed)	Two-Bedroom Apartment Sign Ups in Kline 120
April 5th - 8th	The Nest open for Cluster Housing requests
April 20 (Fri)	Room Sign Ups start on The Nest based on credit levels

FIND THE NEST:

www.messiah.edu/TheNest

FOR MORE INFO:

housing@messiah.edu or rking@messiah.edu

FRY

North Complex

One-bedroom (3-person) Apartments: 34
Two-bedroom (5-person) Apartments: 18

WHY?

- Renovated summer 2007
- Close to the Union

OPEN FOR TOURS

Fry one-bedroom: A303 (tentative)
 Fry two-bedroom:C203

KELLY

North Complex

One-bedroom (3-person) Apartments: 30
Two-bedroom (5-person) Apartments: 10

WHY?

- **Computer lab** and Classrooms/Additional Study Space
- Close to Union & Pit parking
- Steps from Fit Trail, outdoor volleyball court &grills/picnic tables

OPEN FOR TOURS

Kelly one-bedroom:C102
 Kelly two-bedroom:B204

SOUTH

Sollenberger

FAST FACTS!

4 upper-class floors:

1st & 3rd—men

Basement & 2nd—women

5 singles

62 doubles

5 triples

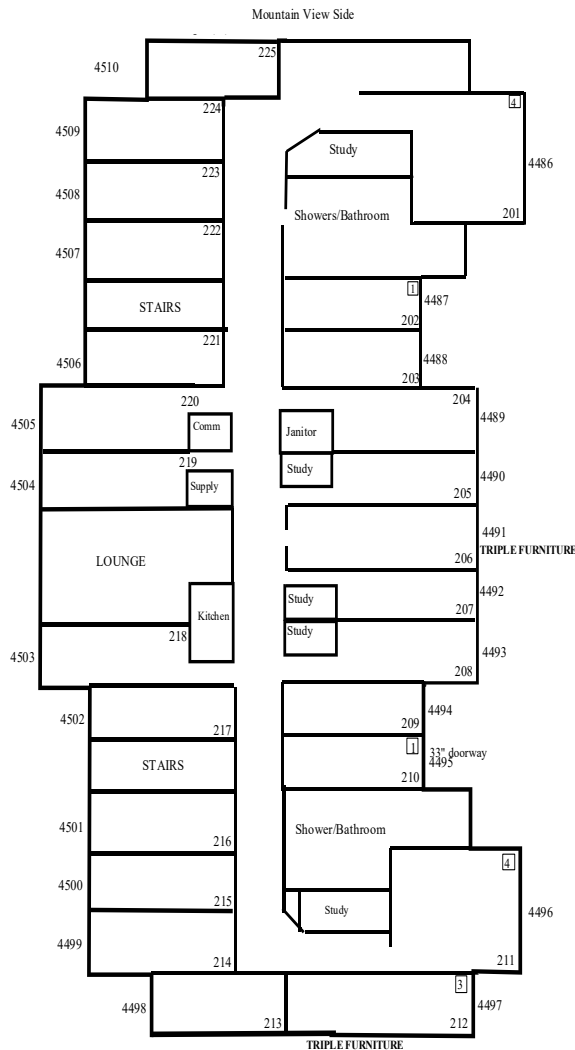
6 quads

WHY?

- Computer lab
- Pool table in lounge
- A short walk to the Union
- Connected by “bridge” to Mt. View & Bittner

OPEN FOR TOURS

Solly Single: 210
 Solly Double: 117, 324
 Solly Triple: 212 (tentative)
 Solly Quad: 201



Schedule for Apartment Sign-Up Nights

Wednesday, March 28 in Eisenhower 207—Res Life Office

One-Bedroom (3 Person) Apartments

6:05 p.m.	> 325 sum total credit hours groups
6:10 p.m.	324-310 sum total credit hour groups
6:15 p.m.	309-300 sum total credit hour groups
6:25 p.m.	299-295 sum total credit hour groups
6:30 p.m.	294-290 sum total credit hour groups
6:35 p.m.	289-280 sum total credit hour groups
6:40 p.m.	279-225 sum total credit hour groups
6:45 p.m.	224-200 sum total credit hour groups
6:50 p.m.	199-171 sum total credit hour groups

- In 2017 the last group to get a one-bedroom apartment had 258 credits; (2016 - 270 credits; 2015 - 290 credits; 2014 - 272 credits; 2013 - 213 credits; 2012 - 292 credits; 2011- 203 credits; 2010 - 287 credits; 2009 - 204 credits; 2008 - 264 credits)

Wednesday, April 4 in Kline 120

Two-Bedroom (5 Person) Apartments

7:05 p.m.	> 520 sum total credit hours groups
7:10 p.m.	519-500 sum total credit hour groups
7:15 p.m.	499-490 sum total credit hour groups
7:20 p.m.	489-476 sum total credit hour groups
7:30 p.m.	469-445 sum total credit hour groups
7:40 p.m.	444-400 sum total credit hour groups
7:50 p.m.	399-375 sum total credit hour groups
8:00 p.m.	374-365 sum total credit hour groups
8:05 p.m.	364-355 sum total credit hour groups
8:15 p.m.	354-340 sum total credit hour groups
8:25 p.m.	339-285 sum total credit hour groups

- In 2017 the last group to get a two-bedroom apartment had 356.5 credits; (2016 - 335 credits; 2015 - 366 credits; 2014 - 361 credits; 2013 - 347 credits; 2012 - 338 credits; 2011- 332 credits; 2010 - 345 credits; 2009 - 340 credits; 2008 - 315 credits)

	Fry	Kelly	Mellinger	Smit h	Lowest number of credits that filled each apartment type in 2017:
3-Person Patio	342	320	308	X	
3-Person Apartment	309	258	298	288	
5-Person Patio	X	495	495	X	
5-Person Apartment	371	362	399	356.5	

MELLINGER

South Complex

One-bedroom (3-Person) Apartments: 13
Two-bedroom (5-person) Apartments: 28

WHY?

- Renovated summer 2016
- Located next to a sand volleyball court

OPEN FOR TOURS

Mellinger one-bedroom: C204 and
A102 (tentative)
Mellinger two-bedroom: B102

SMITH

North Complex

One-bedroom (3-person) Apartments: 14
Two-bedroom (5-person) Apartments: 22

WHY?

- Renovated summer 1999

OPEN FOR TOURS

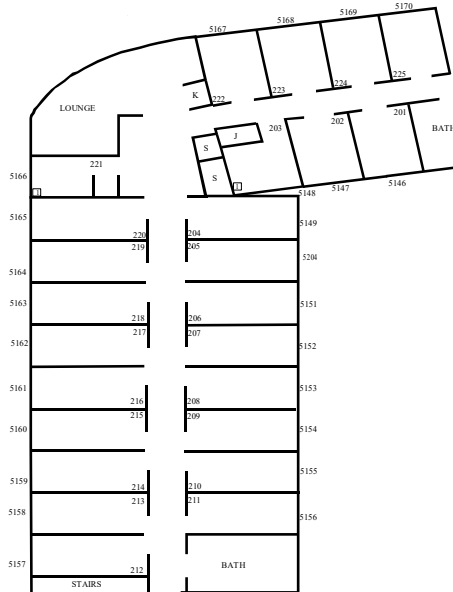
Smith one-bedroom: C303
Smith two-bedroom: A204

FREQUENTLY ASKED QUESTIONS

- 1. What is a proxy?** A proxy is someone who signs up someone else for housing if they are not able to be present for any part of the housing process.
- 2. What if I can't come to apartment sign ups?** Only one person from an apartment unit (or a chosen proxy) has to be at apartment sign ups. If no one from your group can come choose a proxy (see question #1) to sign up for you. If all else fails contact housing and housing@messiah.edu BEFORE apartment sign-ups
- 3. What if I'm going abroad for the fall but want to live with my friend when I return?** Ideally, you'll be able to find someone to live in your spot during fall semester who will be leaving for the spring semester. However, sometimes students don't know yet if they'll be gone for the spring semester and unfortunately you cannot save an empty spot so you may not be able to arrange this. Students can change spots at the end of the semester, so if a room or spot becomes open at the end of the semester you may be able to figure out a way to live with your friend when you return.
- 4. What if I can't sign my contract and/or get my PIN number & time slot?** Please contact the Housing office at housing@messiah.edu or 796-5239 and we will help you get the information you need.
- 5. What if I want to live with one of my friends who will be going abroad during the first semester?** See the answer to question #4.
- 6. What are clusters?** Cluster housing allows students who are interested in living with a group of friends to apply to live together on a floor in any of the upper class buildings. Your cluster may sign up for 3, 4, 5 or 6 rooms on a floor. Priority is given to the groups who have the most credits. Apply for cluster housing on The Nest April 5—8, 2018.
- 7. What if I want to live with someone who is studying abroad right now?** If you are signing up for an apartment your friend can forward you the notice he/she received via email and you may use that to sign up for an apartment. If you are signing up for a residence hall your friend can sign up online just like you do OR he/she can give you his/her PIN and you can sign both of you up for a room.
- 8. What if I don't have a roommate or we need another person to live in our apartment?** Go on to The Nest and on the left side you will see a Roommate Finder link. You can sign up to find a roommate or another person to share your apartment. Or, you can leave your information so that other individuals or groups who need a roommate can contact you.
- 9. Does our apartment or room have to be full when we sign up?** Yes. No exceptions will be made.
- 10. What if I want to live with an incoming transfer student?** Please contact Rhonda King, assistant director of residence life—housing at rking@messiah.edu about your request. Your friend who is transferring in will also need to email Rhonda to confirm that he/she wants to live with you. Incoming transfer students will all live in Bittner.
- 11. What if I think the credit hours on my notice are wrong?** Email housing@messiah.edu with an explanation of what you believe to be wrong and we will verify your credit total.
- 12. What kind of triple rooms are there?** The first type are the rooms that have a larger amount of square footage. In Grantham there are 4 of these, in Solly, 5 and in Mountain View, 6. The bigger triples generally go to juniors. The second type of design triple rooms are only in Mountain View and Grantham. These rooms have the same square footage as the double rooms, but the doubles in these two halls are bigger and have higher ceilings. We have also placed wooden furniture in these rooms that can be stacked and arranged into all kinds of configurations.

NORTH COMPLEX

GRANTHAM



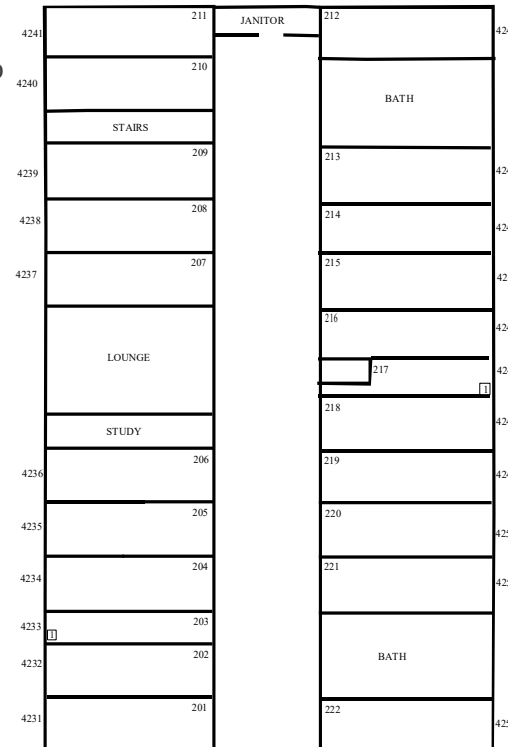
- High ceilings and tall windows
- 3rd floor houses men
- Couldn't be closer to the Union
- BIG lounges with full-sized kitchens and great views of campus
- Directly connected to the Fishbowl

OPEN FOR TOURS

Grantham Single: 020
Grantham Double: 017

MILLER

- Single & Double rooms
- Directly connected to all things North Complex – Fishbowl, Study Lounges, Prayer Chapel, Laundry Room, as well as Hess and Grantham.)
- Easy access to the Union and fitness center
- Close to the Miller meadow, outdoor basketball courts and the Fit Trail.
- Male Floors: Basement and First
- Female Floors: Second and Third



OPEN FOR TOURS

Miller Single: 303
Miller Double: 321 & 214

HESS

- Double & Single rooms
- Smaller floors
- Direct access to all of the North Complex (Fishbowl, Miller, Grantham, laundry rooms, Study lounges & Prayer Chapel
- Steps from the Union!!
- Male Floors: Basement and Third
- Female Floors: First and Second

OPEN FOR TOURS

Hess Single: 206
Hess Double: 113, 222, 305

APARTMENT SIGN UPS

IMPORTANT FACTOIDS

- Individual students who will have earned 57 credits (not including AP & CLEP) by the conclusion of the Spring 2018 semester qualify to live in on-campus apartments.
- Priority is given to groups of roommates with the highest total credit sum.
- Only complete groups are eligible to sign up for apartments.
- A two bedroom apartment capacity is five and a one bedroom apartment capacity is three. No over or under-capacity groups allowed.
- Apartment signups will occur on March 28 in the Residence Life Office & April 4 in Kline 120
- If you have already signed up for study abroad, or a special interest house you may **not** sign up for an apartment. Similarly if you sign up for an apartment you **cannot** sign up for a residence hall room. If you do either of these things, your apartment group will lose the apartment

PLEASE NOTE: The verification process will happen a few days before Apartment Sign Ups. (dates on page 1)

DON'T FORGET: You will need the PIN number in the email notice that is sent to your college e-mail account in order to sign up for an apartment.

PROCEDURE

- The credit total of your group needs to be verified on The Nest. One of your group members will need to log into The Nest. On the left side of the screen there is an 'Apartment Request' link. Click on this link and enter each roommate's PIN number. After submitting all of the PINs, each group member will see the group they have been entered with when they click on 'Apartment'.
- Note the total credits in your group and check the schedule below for the sign up date and time. The highest sum total groups will be permitted to select first. In the event that two or more groups have the same sum total, a random selection will decide priority.
- **Be on time!** Groups arriving late will not sign up until after all other groups within that point time frame have selected housing.
- At least one member of your group (or a proxy) should come to select an apartment at apartment sign-ups. When authorized by a Residence Life staff member, your group or representative will approach the table for the building of your choice and sign up for an apartment. If your first preference is not available, you can try for an apartment elsewhere.
- You will receive a confirmation notice for the apartment you signed up for before you leave. If a roommate decides not to return to Grantham, remaining students will retain the room but **will receive another roommate.**

COMPLEX

Mountain View



FAST FACTS!

- 5 upper-class floors:
- Ground & 3rd: men
- 1st, 2nd & 4th: women
- 6 singles
- 40 doubles
- 34 triples

WHY?

- Spacious rooms with high ceilings
- Amazing views from the floor lounges
- A short walk from the Union, Bittner Beach, Jordan/Kline and Frey

OPEN FOR TOURS

Mt. View: Single 106
 Mt. View Double: 112, 221
 Mt. View Triple: 311