

Putting *faith* into *action*

You are the *salt* OF THE
EARTH . . . You are the

light of the world . . .
let your LIGHT *shine*

BEFORE OTHERS,

so that they may see

your good works

and GIVE *glory* to

your Father in heaven.

Matthew 5:13-14, NRSV

Agapé Center

MISSION STATEMENT

The Agapé Center for Service and Learning develops, administers, resources, and coordinates programs of service-learning, community service, and mission, contributing to the mission of Messiah College to "educate men and women toward maturity of intellect, character, and Christian faith in preparation for lives of service, leadership, and reconciliation in church and society." Students, faculty, and staff work with community-based partners in local, national, and international settings to address community needs, to provide holistic learning opportunities for students, and to encourage students toward an ethic of discipleship, service, and civic engagement.

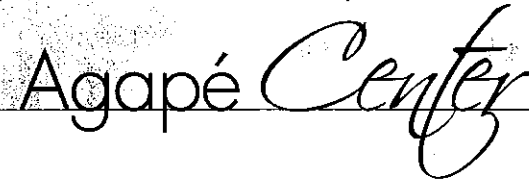
To accomplish this mission we are committed to:

- Support faculty in developing and/or re-designing courses to incorporate service-learning;
- Cultivate reciprocity and mutuality with community partners;
- Place and train students to work at significant community issues through community agencies;
- Encourage and equip students to become servant leaders;
- Provide significant learning opportunities, that include reflection;
- Embody a holistic theology that incorporates word and deed;
- Integrate reconciliation, working for righteousness and justice throughout our programs;
- Challenge students to embrace a lifelong vocation of discipleship and service in their occupations, churches, communities, and world.

TABLE OF CONTENTS

2	Agapé Center
3	Organizational Structure
3	Agapé Center Staff 2005-2006
<hr/>	
4	SERVICE LEARNING
5	Courses that Included Service-Learning
6	Bi-annual Conference Review
7	Student and faculty resources and Benefits
<hr/>	
9	LOCAL COMMUNITY SERVICE
11	Outreach Teams
13	Service Day
13	Special Olympics
14	Into the Streets
15	Dr. King Community Engagement Day
16	S.A.L.T House
<hr/>	
17	NATIONAL AND INTERNATIONAL SERVICE AND MISSION
18	Service Trips
19	World Christian Fellowship
21	Dokimoi Ergatai
23	Hurricane Katrina Response and Relief
<hr/>	
25	Barnabas Servant Leadership Award
26	Calendar of Events
26	By the Numbers
27	Looking to the Future





CELEBRATING SEVEN YEARS OF SERVICE

Reflections from the Interim Director

The Agapé Center for Service and Learning was founded in 1999 with the vision of bringing together various campus groups involved in service and mission. Some of these groups had existed for 15, 25, even 80 years prior to the Center's creation. The Center partners with students, faculty, and partner organizations to facilitate curricular and cocurricular collaboration and the delivery of quality programs based upon shared themes of justice, awareness, reconciliation, learning-guided community service, service-learning, and 'agapé' love.

The Center has grown in excellence and programming over the last seven years. We work closely with faculty to integrate service-learning with course content. We endeavor to provide community partners with greatly needed resources through student volunteers. Our national and international service and mission Teams are impacting this country and the world. Many amazing stories have emerged during the past year, and it is our joy to celebrate those stories with you who have been at the heart of our efforts.

We would also like to celebrate the arrival of the Center's new executive director, Chad Frey. We are confident that Chad's leadership offers great potential—with new passion, collaborations, and vision for the future.

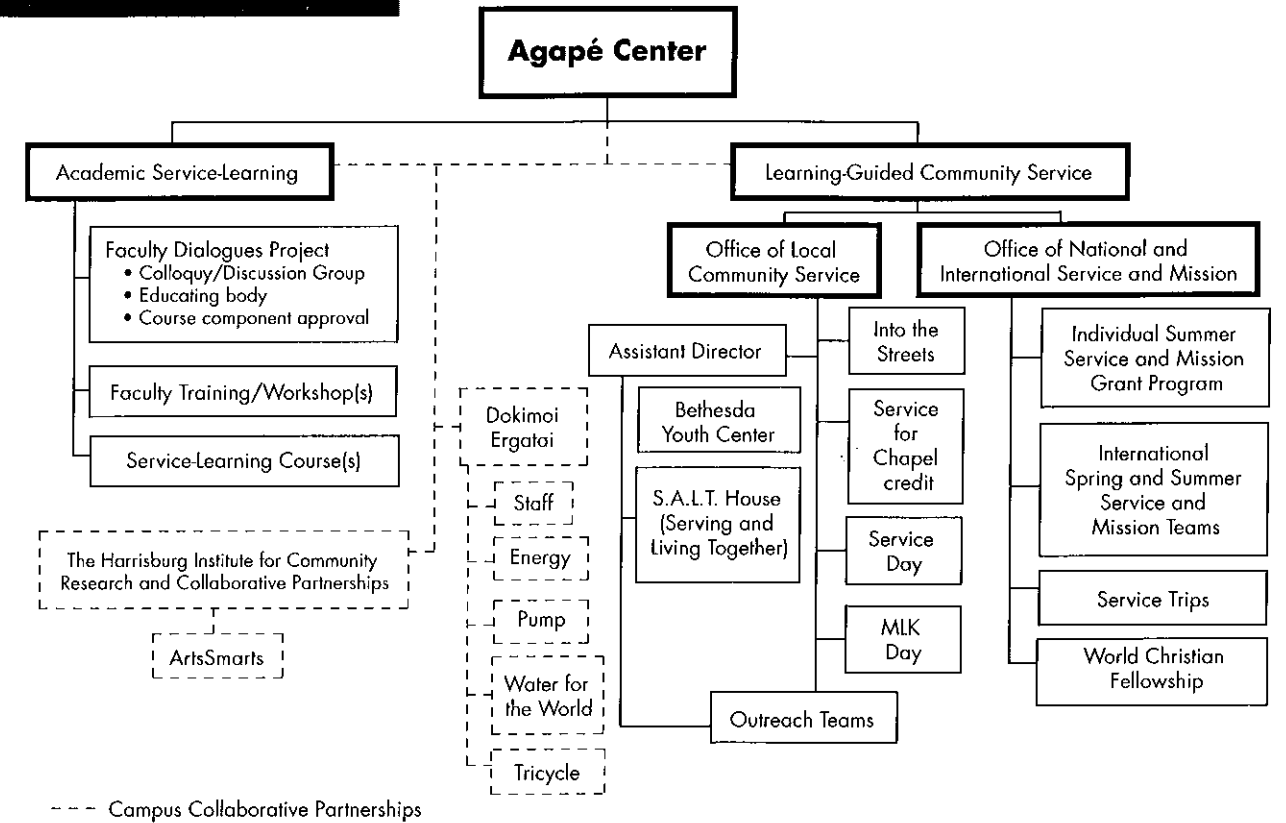
Other Center staff celebrated milestones this past year. Pat Olcott, assistant to the director of the Agapé Center, and Becky Owen, local community service director, recently completed their first years of service at the Center. We appreciate the new life, hospitality, and vision they have brought to the Center and its programs. Abigail Carlisle and Kate Bauer, both part of Pennsylvania Campus Compact Volunteers in Service (PACC-VISTA), finished their terms of service this year. Both have been an integral part of local community service and Agapé Center programming and will be sorely missed.

As we look to the future, we anticipate many new and exciting partnership opportunities that will enable us to put our faith into action. We trust you will find this summary of the Center's endeavors over the last year to be enjoyable and informative.

Greg Anderson
Interim Director of the Agape Center

Many amazing stories emerged during the past year
and it is our joy to celebrate those stories with you
who have been at the heart of our efforts.

ORGANIZATIONAL STRUCTURE



AGAPÉ CENTER STAFF 2005-2006

Service-Learning

- Chad Frey** Director of the Agapé Center for Service and Learning
Office: Agapé Center, ext. 7218, CFrey@messiah.edu
- Pat Olcott** Agapé Center Assistant/Receptionist
Office: Agapé Center, ext. 7255, POlcott@messiah.edu
- John W. Eby** Agapé Center Fellow for Service-Learning
Office: Agapé Center, ext. 7142, JEby@messiah.edu

National and International Service and Mission

- Greg Anderson** National and International Service and Missions Director
Office: Agapé Center, ext. 7235, GAnderson@messiah.edu

Local Community Service

- Rebecca Owen** Local Community Service Director
Office: Agapé Center, ext. 3891, ROwen@messiah.edu
- Kate Bauer** AmeriCorp PACC-VISTA partnership
- Abigail Carlisle** AmeriCorp PACC-VISTA partnership

Agapé Center General Hours of Operation

Office hours: Monday through Friday, 8:00 a.m. to 5:00 p.m.
Agapé Center, ext. 7255
AgapeCenter@messiah.edu

Student Leaders

OUTREACH TEAMS

Outreach Director: Hiearald Osorto '06
Office Assistant: Melinda Raynor '07
Abstinence & Mercy: Angela Livesay '07
Big Brothers/Big Sisters: Natasha Miller '07
Elder Ministry: Becky Hess '06
Habitat for Humanity: Signe Henkel '07
Health & Special Needs: Ben Lamb '07
Human Rights Awareness: Harry Young '06
Hunger & Homelessness: Jennifer Theis '07
Latino and Migrant Education: Joel McIntosh '06
Literacy & Tutoring: Todd Holtzman '08
Prison Ministry: Francesca Scalfaro '08
Performance Teams: Sherki Banks '06
Sustainable Agriculture: Haley McCormack '06
Technology & Outreach Publicity: Tiffany Gay '08
Youth Clubs: Harmony Robinson '08

SERVICE TEAMS

Director: Amy Merrill '06
Leader Coordinator: Jared Quenesberry '08
Agency Coordinator: Melissa Davis '07
Stewardship Coordinator: Lydia Strunk '08
Participant Coordinator: Kristine Harvey '07
Participant Coordinator: Natasha Miller '07
Education Coordinator: Kimberly MacVaugh '07

WORLD CHRISTIAN FELLOWSHIP

Director: Ian Holland '07
Treasurer: Steven Brubaker '07
Fundraising Coordinator: Allison Petry '09
Program Coordinator: Stephanie Nitschke '08
Urbana Coordinator: Vienna Vogelezang '08
Prayer Coordinator: Jenna Hunsberger '08
Worship Coordinator: Daniel Pratt '06
Missions Awareness Week: Megan Bennicoff '07
Missions Awareness Week: Ashley Billard '07
Publicity: Kelly Racer '07

Service-Learning

What is Service-Learning?

Service-learning is a pedagogical model which intentionally integrates academic learning with community service in a credit-bearing academic course. Students participate in an authentic service activity which meets needs identified by the community partner (designed within the framework of a mutually beneficial relationship) and critically reflect on that activity. Thus, students gain a deeper understanding of course content and a commitment to socially responsible citizenship, and they develop skills and understanding needed to contribute to civic well-being.

Faculty members play an integral role in *service-learning* endeavors, using service activities to enrich courses through the interaction of *practical experience* and academic theory. Their involvement allows service to *come alive* for their students.



A Messiah student from the Romanian team enjoys interacting with a local boy.

SERVICE-LEARNING INTEGRATES ACADEMIC LEARNING AND COMMUNITY AID

Service-learning is a form of public engagement and experiential learning. This pedagogical model intentionally integrates education and community service within a credit-bearing academic course.

Students “learn to serve and serve to learn” by participating in authentic service activities that meet the needs identified by a community partner. **During the 2005–2006 academic year, more than 350 students in 22 courses participated in service-learning opportunities.**

Faculty members play an integral role in service-learning endeavors, using service activities to enrich courses through the interaction of practical experience and academic theory. Their involvement allows service to come alive for their students.

The **Faculty Dialogues Group** is a leadership group composed of representatives from each academic school that meets several times each semester. This year, the group developed a definition for service-learning, set criteria for designating service-learning courses, and began work on an organizational structure. Judy Hutchinson from Asuza Pacific University offered insight to help the group consider further refinement of the service-learning program.

The Faculty Dialogues Group also developed a proposal for a **Service Scholars Program**. The program, beginning Spring 2007, will form a learning community of students committed to service. Students will receive a certificate of completion after taking two service-learning courses, finishing 100 hours of community service, and participating in specific events designed for program participants.

Through service-learning endeavors, students enrich their academic experience, faculty members guide students in applying subject matter, and community partners strengthen their programs through the expertise and experience of students.

COURSES THAT INCLUDED SERVICE-LEARNING

Service-Learning Opportunities Span Academic Curriculum

From computer science to biology to health and human performance, students across the five academic schools pursued practical application of their coursework through service with community organizations. Here is a summary of the courses that incorporated service-learning during the 2005–2006 academic year.

Course	Professor	number of students	Hrs of service	Description of service
SOW121, Intro to Social Work (Fall)	Charles Seitz	23	16	Volunteer work
SOW203, Helping Processes I (Fall)	Charles Seitz	10	50	Preliminary placement
SOW204, Helping processes II (Spring)	Charles Seitz	10	50	Preliminary placement
SOW485, Senior Seminar (Spring)	Charles Seitz	10	450	Social work placement
SOW490, Practice in Social Work (Spring)	Charles Seitz	10	450	Social work placement
EDU303, Teaching Math for Primary Grades (Fall/Spring)	Velma Yoder	32/17		Prepared and implemented a station for a math fair in primary grade classrooms in Harrisburg
LDP401, Issues and Challenges in Leadership (capstone for leadership minor)	Jenny Dose	7	15	With an organization of students' choice, students took a leadership role or observed someone in leadership
CSC333, Database Applications	Brian Nejmeh	14		Built a database for World Vision
BIS412, Systems Analysis and Design Applications	Brian Nejmeh	6		Identified, selected, and installed information technology system for Capital Area Pregnancy Center
IDSA200, Eco-Urban Footprints of Post-Metropolis Life	Timothy Peterson	20	At least 20	Service-work at Montgomery Townhouses After-school Program (tutoring) and Urban Tree Connection (helping kids with community garden)
SOC231 Sociology of Aging	Kandy Ferree	22		Students were paired with an older adult (Elder Service Partner—ESP) and both engaged in service for a semester; interviewed ESP and wrote a brief life story on ESP
URB260 Philadelphia Urban Cross-Cultural Studies	Amy Sue VanDerWerf	16	At least 20	Volunteered with local organization of their choice
HPE360 Exercise Testing and Prescription	Doug Miller	26		Each student completed Conditioning Consultant Program with a Messiah College employee; pre- and post-semester testing, wrote individualized exercise prescription, met with client regularly
SOC101, Principles of Sociology	John Eby	35	16	Volunteered with Agape Center community service program; wrote four critical analysis papers
SOC356, Race, Ethnicity, and Gender	John Eby	17	16	Volunteered with Agape Center community service program; wrote four critical analysis papers
SOC232, Foundations of Service Mission and Social Change	John Eby	18	At least 6 weeks+	Service in the summer with a service or mission assignment with an off-campus agency
BIO271, Ecological Field Techniques	David Foster	12	9	Wetlands inventory of Coover Park, Dillsburg, PA (12 acres that was found to be 90% wetlands)
FYS, “Making A Home Away From Home”	Chad Frey	16		Community service project at Silence of Mary Home in Harrisburg
SOW 391—Helping Processes IV: Practice with Organizations and Communities	Vicki Root	10		Created two needs assessment surveys for New Hope Ministries—Adult emergency services and after school program
SOW 221 Human Behavior	Vicki Root	14	16	Volunteered to work one-on-one with clients
BIS230 Computer Applications	Robert Kilmer	20		Provided seminars on campus about industry-standard computer software to staff from about 10 local not-for-profit organizations

Course Cultivates Foundational Understanding of Service, Mission, and Social Change

Foundations of Service, Mission, and Social Change (SVC 231/2) offers students a unique opportunity to relate classroom learning with everyday experiences. The course focuses on service and mission—both as a central motivation for all that students are and do, and as the call from God to provide personal and social care and share the good news of Jesus with neighbors.

The course combines the academic study of the mission of the church in the world with a summer experiential service-learning activity. The course draws on perspectives from sociology, theology, missions, and concepts of service-learning in a discussion-oriented classroom setting.

Spring semester is a traditional, three-credit course in preparation for a summer service project.

During the summer, students serve with a mission or service agency in the United States or abroad, putting into practice and testing what they have learned.

Fall semester is a one-credit course where students reflect on and learn from their summer experiences. Through the in-depth reporting of their observations and activities, students consequently link their reflections with ideas and concepts studied during the spring semester.

Here is a glance at examples of summer service opportunities where Messiah students have served:

Guatemala: Working with children in an orphanage

Honduras: Working with food production and development

Nicaragua: Partnering with local people working for justice

Camden, New Jersey: Living, learning, and sharing life in a disadvantaged neighborhood

China: Teaching English

Ocean City, MD: Participating in a boardwalk ministry

Costa Rica: Living on a farm while developing and demonstrating sustainable agriculture

Appalachia: Doing home repair

Detroit, Mich.: Assisting in a ministry in a Muslim community



A member of the team to Guatemala takes a break to play with these two young boys.

BI-ANNUAL NATIONAL CONFERENCE REVIEW

CONFERENCE FOCUSES ON THE INFLUENCE OF FAITH TRADITIONS ON SERVICE-LEARNING

With support from the Lilly Endowment, The Agapé Center's fourth biannual service-learning conference—Faith Traditions, Spirituality, and Service-Learning—was held on June 1–3, 2006. The event attracted 150 participants representing a broad variety of Protestant, Catholic, Mormon, and Buddhist perspectives. The conference was designed for both veteran and newcomer faculty who teach service-learning courses, directors of service-learning programs, student life staff working in service-learning, and community partners.

Many students report a spiritual motivation for participating in service-learning; thus the 2006 conference focused on the faith dimension of service-learning. The conference covered how various faith traditions and theologies contribute to the philosophy and practice of service-learning and the extent to which faith-based institutions are intentional about reflecting their faith traditions in service-learning.

The conference boasted a notable roster of speakers. Elizabeth L. Hollander, executive director of Campus Compact, was the keynote speaker. Hollander challenged attendees to consider whether education for faith, spirituality, and active citizenship are compatible or conflicting goals. Sharon Stiles of Vanderbilt University—a nationally recognized leader in service-learning—led a session on the interconnectedness of personal, professional, and social passions. Dwight Giles, from the Graduate College of Education, University of Massachusetts, Boston, also provided unique insights and perspectives for participants. He facilitated a very helpful question and answer session, sharing much about his practical experience and theoretical framework.

Workshops and plenary sessions covered a wide spectrum of topics, including successful service-learning in various academic schools, building effective community partnerships, the role of service-learning in academia, and designing and sustaining a service-learning program. The program concluded with an interactive panel discussion of current research and pressing issues in the field.

What Can Students Gain from Service-Learning?

- Greater understanding of concepts and skills studied in the classroom
- Hands-on experience
- Deeper vocational identity, spiritual worldview, and leadership development
- Critical cultural and spiritual commitments
- Applied understanding of their civic engagement responsibilities
- Deeper, life-long commitments to justice, reconciliation, and love for their neighbors

What Can Faculty Gain from Service-Learning?

- New holistic opportunities to engage students with educational objectives
- Personal satisfaction in knowing their students are making a difference in their communities
- A renewed challenge in understanding and applying the subject they are teaching
- New competencies in applying a unique, respected and valued pedagogy
- Recognition and resources through research and application grants
- Publication opportunities for applying Service-Learning pedagogy

What Resources are Available for Faculty?

- Service-Learning Grants
- Assistance with course development (ie. syllabus construction, student placement, directed reflections, project logistics, etc.)
- Agapé Center Service-Learning Library
- Agapé Center Online-Service-Learning Tracking Database—to assist with managing students, locations, and hours served
- Information about service opportunities in every academic major
- Faculty Development Opportunities—workshops and seminars
- The Dialogues Project: Service-Learning Faculty Fellows
- Bi-annual national faith-based service-learning conference hosted at Messiah College
- The Agapé Center resource website www.messiah.edu/external_programs/agape/service_learning/web.html

SERVICE-LEARNING GRANTS

Faculty Service-Learning Grant

This grant is designed to encourage faculty to integrate service-learning into courses. The grant can be used for a faculty stipend and/or course-related expenses.

Student Service-Learning Grant

This grant allows qualified juniors or seniors to work for a semester or a full year as an apprentice for a faculty member who offers a significant service-learning course. The amount of the grant is \$450 per semester. Scholar intern proposals may be included as part of another grant proposal or may be submitted independently.

The activities undertaken by a student intern will vary according to the needs of the project, but the time commitment of the intern should not exceed 75 hours per semester.

Faculty Grant Maximum Amount	\$1,050
<i>Number available: 2</i>	
Student Scholar Intern Grant	\$450 or \$900
<i>Number available: 3</i>	



The Mexico Team works on team-building activities before their trip.

Service-Learning has become a *vital* part of how my students are truly learning their subject matter and exploring their vocational calling. One of my students put it well in one of his journal *reflection* entries: "It still *boggles* my mind to think that I can *participate* in mission and humanitarian efforts by doing something I like to do: writing computer software."

—Brian Nejme, Associate Professor of Business Information Systems and Entrepreneurship

"Thanks so much for the grant,
and for *supporting* me
in this endeavor!" —Adam Eppler '06

What Resources are Available for Students?

The Individual Grants Program provides grant aid for students pursuing their research and scholarship through service-learning during the summer, or students interested in volunteering. The funds are used to either cover summer expenses or replace lost summer earnings. The program is made possible through generous and selfless giving of donors, alumni, students, staff, and faculty who are passionate about seeing the world transformed. The Center is also thankful for the Mulberry, Frey, Parent's Council, and World Christian Fellowship grants and endowments.

The Agapé Center supports students applying for the prestigious **Simon Fellowship Award**. Each year three fellowships are awarded for Noble Purpose. The top award is for \$40,000 with two additional grant opportunities of \$5,000 each. This year the Agapé Center supported Eunice Aryee and Hieraal Osorto throughout the rigorous application process.

In the future, the Agapé Center will strive to increase student and faculty awareness of the grants program and continue to seek more funding possibilities for additional grants and endowments.



Members of the Mexico mission team enjoy opportunities to interact with the local community.

Individual Grants Program at a Glance

Summer 2005	
Grants	27 recipients received a total of \$51,100 in grant aid
Service-Learning Class	18 participants committing to at least eight weeks of national or international service
Summer 2006	
Grants	28 recipients received a total of \$51,670 in grant aid
Service-Learning Class	19 participants committing to at least eight weeks of national or international service
Where students served	2005—20 different countries 2006—19 different countries
How many different organizations	2005—21 2006—25
Total hours	For Grant recipients—6140

Bonds of friendship form between service team members and Guatemalan children.

How students served or are currently serving

- Construction (homes, schools, churches)
- Teaching English
- Vacation Bible school/children's programs
- Local church outreach
- Youth development/training
- Community surveys and needs research
- Orphanage house family
- Building cross-cultural relationships



Local *Community* Services

Rebecca Owen
Local Community Services Director
Ext. 3891, ROwen@messiah.edu

Nurturing Partnerships Across the Community

When asked to identify their greatest need, the Agapé Center's Outreach Teams and Service Plunge community partners agree it is consistent and reliable volunteers. The Center strives to fulfill that need by carefully matching student volunteers with the partners' identified needs. Many partner organizations report that the residents of their communities appreciate the presence of Messiah College in their neighborhoods, and the organizations express their deep gratitude for student volunteers who help their programs function and flourish.

The Agapé Center seeks to provide consistent, quality service to its 32 ongoing community partners (see list on page 11) while initiating new partnerships when student skills and interests prove able to support a need in the community. To strengthen partnerships, the Center holds a Community Partner Appreciation Event each fall. Community partners are invited to enjoy a meal and presentation while interacting with students, faculty, and one another. This year's event highlighted ways service-learning courses in the School of Math, Engineering, and Business could benefit organizations in need of computer networking, database formation, and computer training.

STUDENTS' LIVES CHANGE THROUGH SERVING COMMUNITY PARTNERS

Local community service opportunities offered through the Agapé Center provide students with the chance to apply their talents, skills, and gifts to the programming of local service organizations. Student volunteers provide the staffing and support that enables these organizations to fulfill their specific missions.

The Center coordinates a wide variety of service opportunities with community partners. Centered in Harrisburg and surrounding suburbs, students serve in tutoring centers, hospitals, migrant education programs, inner-city neighborhoods, and at many more venues.

Other local community service outreach activities are designed so that students, faculty, and staff can serve side by side. Such opportunities include a campuswide Service Day, Into the Streets, and Dr. King Community Engagement Day.

Service opportunities have assisted many students in defining identity and purpose in their lives and studies. Many participate in local community service programs with the intent of helping others, but often come away having received as much or more than they gave. One student reflected, "Service is mutual and it includes being able to accept acts of love as well."

Local service opportunities are designed not only to meet the programmatic needs of local organizations, but also to facilitate students' growth as well. Diana Fetzer '06 volunteered at Abba's Place, a weekly children's ministry in Harrisburg, for four years and grew tremendously through her experience. "Even going into college and being undecided in my major, the one thing I knew was that I wanted to help others in some way," she recalls. A human development and family science major, Diana credits her volunteer involvement with helping her find clarity in her life's direction to pursue a graduate degree in guidance counseling.

The Agapé Center continues to identify local ministry opportunities that blend the goals of positively impacting community organizations and those they serve as well as fostering a desire for service in students.



Urban Promise Weekend in the fall provides inner city children the chance to visit Messiah's Grantham campus and spend time with student volunteers.

Fulfilling Chapel Credit Through Service Encourages Social Accountability and Awareness

Fulfilling Chapel Through Service is an alternative opportunity for upperclassmen to receive chapel credit while serving others. Students are encouraged to view their service as worship. Students are required to read service-related articles and write response papers that encourage them to think beyond the surface of meeting people's needs to the systemic issues in society that perpetuate injustice. Service can shed light on aspects of injustice that are hidden or misrepresented by the media and other societal influences.

Francisco Fernandez '07 volunteered at New Hope Ministries' Kids Club in Dillsburg. Through several semesters of involvement, he realized the service he was providing was just a small piece of the overall picture. "In order to adequately serve . . . one must not only take into consideration 'the orphan and the widow' individually, but also hold accountable the very society and bureaucratic systems which impoverished these individuals," he said.

"The experience sheds light on the stereotypical views shared on both ends—those held by Messiah College students and by the migrant students."

—Students Elsa Collins '07 and Kristen Tadlock '07 on the Migrant Education Retreat

Alumnae Complete Volunteer Service at Center

The Agapé Center had the privilege of hosting two alumnae volunteers through Pennsylvania Campus Compact's Volunteers in Service to America (PACC-VISTA). Kate Bauer '03 completed her third year of service as the local community service assistant director working with the Bethesda Youth Mentoring Program and serving as the live-in house advisor for S.A.L.T. House (Serving and Living Together). Abigail Carlisle '04 worked as the Center's community partner liaison in the planning and implementation of the inaugural Dr. King Community Engagement Day. Abigail also strengthened other programs through the Institute for Cultural Partnerships and the Migrant Education Program of Chambersburg.

The Center appreciates the skillful and intentional work Kate and Abigail have provided in the development and sustainability of student volunteer programs through Outreach Teams. We wish them well in their future endeavors.

In addition to providing students with volunteer opportunities in the local community, the Outreach Teams hosted the Urban Promise weekend in October, inviting 75 third through fifth grade students from Camden, N.J. and Wilmington, Del., to campus to experience the life of a college student. In addition, student coordinators organized a number of alternate chapels and theme weeks on campus, including Hunger and Homelessness Awareness Week and Human Rights Awareness Week.

Middle School students enjoy the Migrant Education Retreat program when they get to stay overnight in the dorms with Messiah College students and learn thorough fun workshops and activities.

Strong Service, Mission, and Participation 2005–2006

Local Community Service Involvement

Regular Local Community Service Outreach Teams	389 volunteers
Fulfilling Chapel Credit through Service	fall 52/spring 20

Service Plunge days

Into the Streets	767 first-year and transfer students 43 community partners
Dr. King Community Engagement Day	37 participants
Service Day Special Olympics	590 students 134 employees
Off-Campus	595 students 157 employees 56 sites

Student-run retreats on campus

Urban Promise Weekend	75 elem. students with over 50 Messiah volunteers
Migrant Education Retreat (fall)	45 middle school students with 20 Messiah volunteers
Migrant Education Retreat (spring)	21 high school students with 20 Messiah volunteers



OUTREACH TEAMS

OUTREACH TEAMS BUILD BRIDGES BETWEEN MESSIAH AND THE LOCAL COMMUNITY

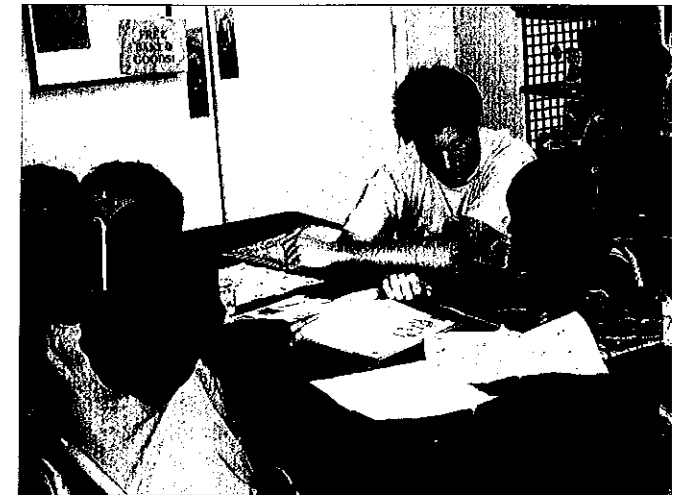
This year, the Agapé Center Outreach Teams—composed of over 400 volunteers from the Messiah College student body and organized by a team of 15 student coordinators—served the local community at 32 sites in Harrisburg, Mechanicsburg, Dillsburg, Chambersburg, and Camp Hill. Committed to being agents of effective change, these students "built bridges"—according to Outreach Teams director Hierald Osorto '06—between the College and individuals in the surrounding communities.

Students Transforming and Being Transformed

One senior elementary education major volunteering with the Big Brothers Big Sisters (BBBS) program in Harrisburg commented, "Sometimes our true passions in life are not found until we actually work with the cause." Students serving through Outreach Teams not only share Christ's message of love and truth in the community, but grow in comprehension of the reasons behind the needs they serve in the process. In addition to arranging service opportunities, Outreach Teams initiate training and advocacy activities for students. Natasha Miller, this year's BBBS Outreach Teams Coordinator, invited the Harrisburg School District Superintendent to present on the district's history and initiatives. This helped volunteers gain better insight into the background of the students they mentored. The philosophy of Outreach Teams is that understanding the factors that have contributed to the realities of inequality and suffering in communities helps Christians fulfill their responsibility to bring the hope and transformation of Christ by combating these realities. For this reason, Outreach is striving to increase the reflection component of service programming at Messiah College to understand the inequalities deeply rooted in our communities, such as racism, health care, language services and education.

Outreach Community Partners

Abba's Place 14 years (1992)	Big Brothers Big Sisters 10+ years	Lincoln Intermediate Unit Migrant Ed. 6 years (2000)	New Hope Ministries-Dillsburg 10+ years	Schaffner Youth Detention Center 8 years (1998)
Allison Hill Community Ministry 14 years (1992)	Catholic Worker House 6 years (2000)	Messiah Village 28 years (1978)	Orchard Apartment Tutoring 1 year (2005)	Seidle Hospital 11 years (1995)
Amnesty International 10 years (1996)	CATRA 11 years (1995)	Migrant Child Development Program 1 year (2005)	Paxton Ministry Since it began (1981) 25 years	Silence of Mary Home 2 years
Best Buddies • 4 years (2002) • Also expanded partnership to ARMS and Paxton Ministry	Center for Champions 2 years	Morning Star Pregnancy Services 1 year (2005)	Prison Fellowship Ministries • Project Angel Tree • Prison Ministry Training: 3 years (2003)	Urban Young Life 5 years (2001)
Bethany Village 10+ years	Central PA Food Bank 8 years (1998)	Mt. Pleasant Hispanic Center 6 years (2000)	Promise Place 8 years (1998)	Young Life Cumberland County 10+ years
Bethesda Mission Since it began (1914)— 92 years!	Habitat for Humanity—Harrisburg 11 years (1995)	New Hope Ministries—Mechanicsburg 10+ years	Saint Barnabas Center for Ministry 1 year (2005)	
	Institute for Cultural Partnerships 1 year (2005)			



Many after school and tutoring programs appreciate the additional staff volunteers provided. Here, Josh Wethli '06 guides students through their homework assignments at the Orchard Apartments tutoring program in Camp Hill.

"Serving is not merely an action—it is the fulfillment of our call as Christians to 'Love thy neighbor as thyself.'"

—Hierald Osorto '06, Outreach Team Student Director

OUTREACH TEAMS

WHAT'S AN OUTREACH TEAMS COORDINATOR?

To pursue this holistic approach to service as bridge builders between the student body and the communities surrounding our campus, Outreach Teams Coordinators commit to the following responsibilities:

- Arrange regular meaningful service projects with community partners
- Recruit students to volunteer
- Provide orientation, training and reflection activities for volunteers
- Assist faculty with service-learning placements
- Work with staff to coordinate one-time service opportunities
- Gather for bi-weekly team meetings for service and leadership training and team building
- Meet with local community service director bi-weekly
- Explore current events affecting each area of service and promote campus awareness

We all Scream for Ice Cream!!!

Students are given the opportunity to explore the different Outreach Teams at two main recruiting events: the Ice Cream Social in the fall and the Service Fair in the spring. These events give students the opportunity to explore information and sign up for service activities. Volunteers may be looking for ways to serve for the Service Learning classes, the Fulfilling Chapel Requirement through Service program, or because of their own interest in and commitment to service.

One major accomplishment this year was the implementation of the Outreach Teams Constitution, which outlined in detail the mission statement and a basic overview of what Outreach Team coordinators do throughout the year. This proved to be very helpful for team identity as well as to streamline procedures and relations with the SGA and others outside the Agape Center to gain a better understanding of the organization.

"It is important to address injustice and service in one's lifestyle because, I believe, that is the purpose of our lives, especially as Christians. Reaching out to others in the name of Christ isn't just about getting someone into heaven; it's about working here on earth to bring about the kind of place Jesus worked to establish in his earthly ministry. Therefore, we should be doing likewise."

—Jacquelyn McCormack, Messiah Village volunteer, junior Psychology major



Pictured left; Prison Ministry Outreach Team student volunteers pose with women from the Promise Place after enjoying a meal together on campus. Pictured right; Kelly Racer, Outreach Teams volunteer with a Messiah Village resident friend.

SERVICE DAY AND SPECIAL OLYMPICS

STUDENTS, FACULTY, AND STAFF PARTICIPATE IN CAMPUSWIDE SERVICE DAY

Nearly 1,500 students, faculty, and staff joined forces and participated in Messiah College's seventh annual campuswide Service Day. Daytime classes were cancelled and many campus offices closed to afford the college community the opportunity to serve at off-campus project sites and the Special Olympics. Many area agencies and churches welcomed teams of willing laborers to help complete projects that may otherwise have been left undone. "Seeing so many Messiah students and year-round staff members working together to serve the community was really powerful," said one Messiah participant. "It was a real testament to what the Christian life is all about."

Volunteers Support Special Olympics Athletes

Due to renovations at Starry Athletic Complex at Messiah College, the 2006 regional Special Olympics were held at Cumberland Valley High School. More than 700 students, faculty, and staff provided assistance and encouragement to the athletes participating in track, field, and pool events.

Service Day:

Total Service Day Participation	2005	2006
Community Projects	626	752
Special Olympics	790	724
Total	1416	1476

Off-Campus Participation

	2005	2006
Students	424	595
Faculty/Staff	132	157

Special Olympics Volunteers

	2005	2006
Students	N/A	570
Faculty/Staff	N/A	32
Dining Services	N/A	40
Public Safety	N/A	32
Grounds	N/A	14
Campus Events	N/A	16
Student Committee	N/A	20

Community Projects:

Total Community Projects:	56
Organized by staff or faculty	18
Organized by Outreach Teams	7
Organized by the Office of Local Community Service	12
Organized by students and/or clubs	8

2006 Service Day Project Locations

Allison Hill Community Ministry
 American Red Cross of the Susquehanna Valley
 Bell Socialization Services
 Bellevue Park
 Bethesda Mission Youth Center
 Big Spring Heights Church of God
 Boys and Girls Club
 Brajkovich Farm
 Brethren Housing Association
 Caitlin's Smiles
 Camp Curtin YMCA
 Canine Rescue of Central PA
 Capital Area Pregnancy Center
 Capital Area Therapeutic Riding Association
 Carlisle YMCA
 Catholic Worker House
 Coover Park
 Cumberland Crossings Retirement Community
 Daybreak Church
 Dokimoi Ergatai
 Downey School
 Ecumenical Community
 Falling Springs Nursing & Rehabilitation Center
 Fort LeFort
 Freedom Valley Worship Center
 Grantham Locale
 Habitat for Humanity
 Harrisburg Brethren in Christ Church
 Hidden Valley Boy Scout Camp
 Interfaith Shelter
 Joshua Farm
 Kings Kid's Camp
 Mechanicsburg Meals on Wheels
 Messiah Village
 Microsoft Excel Workshop
 Migrant Education Retreat
 Migrant Education Office
 Neighborhood Center



A buddy with his athlete at the Olympic Village where there are games, clowns, and face painting for younger athletes.

New Cumberland First Church of God
 New Hope Ministries
 N. York County Historical & Preservation Society
 Our Lady of Blessed Sacrament Catholic Church
 Project SHARE
 Safe Harbor
 Seidle Hospital
 Shepherdstown Park
 Silence of Mary Home
 Swatara Church of God
 The Outdoors Club
 United Methodist Home for Children
 Wellness Center
 West Shore Evangelical Free Church
 West Shore YMCA
 Wildwood Lake Sanctuary
 YWCA Harrisburg

Many students enjoy off-campus projects that are outdoors preparing landscaping and facilities for busy spring and summer activities at area churches and non-profit agencies.



INTO THE STREETS

NEW STUDENTS TAKE SERVICE "INTO THE STREETS"

On their second day at Messiah, new students joined classmates, faculty, and community members in local service projects through Into the Streets, a key annual component of new student fall orientation activities. Into the Streets introduces students to community service at Messiah and challenges them to volunteer on a regular basis.

The Agapé Center's community partners provide Into the Streets projects which often extend into opportunities for students to implement service throughout the year. Each project is facilitated by upperclassmen leaders who encourage class community and lifestyles of service.

One peer group went to Promise Place for their Into the Streets Project. They enjoyed their experience of meeting the leaders and hearing about the organization as well as spending time with the women and helping out on a number of projects. Many mentioned that they wanted to remain connected with the organization which was possible through already existing teams of volunteers that serve throughout the year at Promise Place through Outreach Teams.



Landscaping at the Helen Kraus Animal Foundation was the main Into the Streets project for this class of first year students.

Into the Streets Community Partners 2006

Abba's Place
YWCA of Harrisburg
Allison Hill Community Ministry
Bethany Village West
Bethesda Mission
Boys and Girls Club
Canine Rescue
Capital Area Therapeutic Riding Association
Catholic Worker House
Center for Champions
Central PA Literacy Council
Central PA Food Bank
HELP Ministries
Danzante
Dogwood Run Watershed Cleanup
DVS/CP
Habitat for Humanity
Harrisburg BIC
Helen Krause Animal Foundation
Institute for Cultural Partnerships
Interfaith Shelter
King's Kid's Camp
Loveship Inc.
Mechanicsburg Meals on Wheels
Messiah Village
Morning Star Pregnancy Services
Neighborhood Center
New Frontiers Day Camp
New Hope Ministries



Into the Streets provides many area agencies and churches with teams of students to clean up and prepare facilities for upcoming fall programming.

Pride of the Neighborhood Academies
Project Linus
Project SHARE
Promise Place
Ronald McDonald House
Saint Paul's Episcopal Church
Seidle Hospital
Silence of Mary Home
The Arc
DELTA Community
Leukemia and Lymphoma Society
SHARED Ministry
Tri-County OIC
U. M. Home for Children

DR. KING COMMUNITY ENGAGEMENT DAY

CENTER ORGANIZES DR. KING COMMUNITY ENGAGEMENT DAY

The Agapé Center collaborated with Messiah's Office for Multicultural Programs and three Harrisburg community partners to organize the Dr. King Community Engagement Day as an inspiring start to Messiah College's inaugural Rev. Dr. Martin Luther King, Jr. Commemoration Week. The day provided an opportunity for students to learn about the life and vision of Dr. King while discovering more about the various communities within the city of Harrisburg and their residents.

Students helped design the day, stating it would be most meaningful to them if they could:

- Be engaged and learning, not just "doing service"
- Meet partner organizations' leadership and clients
- Learn about Martin Luther King, Jr. and his non-violent views and practices



Jenna Ness (right) awaits a meal of rice, beans, and cornbread with some Silence of Mary Home residents on Dr. King community Engagement Day.

The Goal of Dr. Martin Luther King Jr. Community Engagement Day

To commemorate the legacy of Dr. King by spending Rev. Dr. Martin Luther King, Jr. Day engaged in serving and learning.

There were four key components to the day:

- A one-hour educational tour of Harrisburg from Dr. King's perspective. The tour included downtown, uptown, and midtown sites; the Allison Hill neighborhood; and the Civil War Museum.
- Gathering at Grace United Methodist Church where students heard from Pastor Anthony Alexander about the church and the history of Harrisburg with an emphasis on race relations. David Hietala, director of Messiah College's Harrisburg Institute shared information about the Institute and about Dr. King's life.
- Visits to one of three sites—Silence of Mary Home, Harrisburg Brethren in Christ Church, or Paxton Ministries. Students learned about the sites' work through the perspective of Dr. King's life and vision and had the opportunity to serve through painting, discussion, and a group art project.
- A time of reflection and evaluation concluded the day at Grace United Methodist Church.

The experience left participating students reflecting on key issues, including servanthood, racial boundaries, and community. "I learned the joy of service as community-building and breaking the walls of discrimination," one student said. Students reported leaving the day yearning for more time to talk about Harrisburg's history, especially in the area of civil rights, additional opportunities for service, and a deeper understanding about the life and vision of Dr. King.

Dr. King Community Engagement Day Community Partners:

- Harrisburg Brethren in Christ Church
- Paxton Ministries
- Silence of Mary Home

"I learned the joy of service as
community building and breaking
the walls of discrimination."
—student participant

"Thank you so much for all the *love* and *energy* that we *benefit* from during the Into The Streets and the Service Day projects. The jobs may seem like tasks anyone could do but you supply the *angels* that we don't have and they do it with such great *love* that we all grow together as the body of Christ . . . it is always *uplifting* for us at Allison Hill Community Ministry and Derry Street United Methodist Church."

—Janice Evans of Allison Hill Community Ministry, Community Partner

National and International Service and Missions

S.A.L.T HOUSE

STUDENTS LIVE AND SERVE TOGETHER IN COMMUNITY

The S.A.L.T (Serving and Living Together) House is an intense and intentional community living experience at Messiah College. Since its inception 11 years ago, each community member has committed to service to their housemates and the surrounding community.

Ten students lived in the S.A.L.T. House this year. Despite busy schedules, the students were committed to serving as Christ served, to fully understanding the implications of serving in their lives, and to living out their faith according to Christ's example. The group endeavored to be hospitable and welcoming to one another and community members while working together and finding balance between silence and conversation. Student enjoyed finding community by playing, talking, and serving together.

Residents of the S.A.L.T. House gave a total of 520 hours of service last year, demonstrating that the impact of this small community goes beyond the four walls of the House. The seven Messiah seniors who lived in the house this year are currently living in the Harrisburg community. Next year, six students who have lived at the house this year plan to live in Harrisburg and three Messiah graduates who lived in the S.A.L.T. House are now working for community partners of the Agapé Center.

S.A.L.T. House Service at a Glance

Number of residents	10 (5 men, 5 women)
Annual average number of service hours per person	52
Total number of annual service hours	520
The community partners (individuals served with on a regular basis included)	Hispanic Center ESL Best Buddies-Paxton Ministries Allison Hill Community Ministries Orchard Hill Apartments Tutoring Catholic Worker House World Christian Fellowship Bethesda Youth Center Mobile Mission-Bethesda Mission
House service projects	Paxton Fest! Mobile Mission



S.A.L.T house residents enjoy a moment together before their community meal.

Reflections on a Year of Community

Kate Bauer, local community service assistant director

As I reflect on the past year at the S.A.L.T. House, I celebrate the wonderful group I was privileged to be part of and I am encouraged by the growth I saw in each of us as the year progressed. Each house member brought their own unique gifts and personality to the team and we worked very well together. I was encouraged by the effort we made to spend time together at our weekly community meals and during community time following those meals, as well as the value placed by everyone on that time.

We enjoyed our semester house service projects, Mobile Mission and PaxtonFest, as a time for us to join with each other in service. Each member of the house was also committed to one community partner for the year and would serve there weekly. This brought great insight into our time together as we struggled over what it means to be followers of Jesus in our world today.

The group this year struggled with what it means to be a community house in the midst of a transitional college experience. We wrestled with this and many other topics over meals and during community time and late-night discussions. The discussions that occurred in the house provided beautiful opportunities for growth and processing as the year went on. We contemplated a wide variety of issues together as we continued to learn to live together. We explored difficult questions concerning living in community, sociology, politics, religion, and simple living. Looking back on the year, I am most encouraged by the places I observed growth in others in the house and myself as we processed life together.

I appreciated our times *together* as a big group playing,

talking, and working through things together.

—Kate Bauer

STUDENTS TOUCH LIVES IN THE U.S. AND ABROAD

The Agapé Center's National and International Service and Mission programming offers students opportunities to exercise their faith and enhance their educational experience in practical, life-changing ways. Students can participate in the following:

- International mission trips during spring or summer breaks
- National mission trips during fall, J-term, and spring breaks
- World Christian Fellowship, a student-led group dedicated to increasing concern for the world through awareness, action, and prayer
- Dokimoi Ergatai, a group focusing on developing appropriate technology to meet the physical needs of people in other countries

As it coordinates service experiences at home and abroad, the Center continually strives to assess current programming and identify potential improvements. Future considerations include:

- Enhancing the student coordinator training module to include the most helpful materials to equip student leaders for practicing leadership and training student teams
- Completing the advisors' training manual and continuing to improve how advisors interact with their teams
- Fostering deeper relationships with faculty who teach leadership courses so they will encourage students to serve as student mission team coordinators as their practicum experience
- Enriching the relationship between mission trips and the Christian ministries major, especially the cross-cultural emphasis.

International Service Trips Offer Service, Leadership, and Reconciliation to the World

Each August, the Agapé Center selects locations and lays the foundation for international mission trips that will take place the following spring and summer. Each student team, along with participating faculty or staff members, come together in early November and begin meeting weekly until their departure date. The weekly meetings allow the teams to develop close bonds of community, accountability, and trust. Through the sharing of many experiences, the students prepare themselves to work together as the body of Christ in service to God and the world.

The teams also attend a cross-cultural training retreat where they grow closer through challenging learning activities focused on ministering and building relationships in settings unlike their own. Each step of their preparation stretches and challenges students to understand what it means to be agents of service, leadership, and reconciliation in the world.

Each spring, teams go to Northern Ireland and Belize. These repeat trips allow teams to foster deeper relationships and more effective service through evangelism, community development, and ministry. Some students have returned to these countries two or three times, finding their service to be a foundational and life-changing part of their Messiah careers.

In summer 2005, The Agapé Center began sending service teams on two longer-term trips. This new style of programming has proven to be a very effective alternative to those who want to delve deeper in the international missions experience. In 2005, one team spent eight weeks in Chile and another team served in Japan for six weeks. In summer 2006, a team served for eight weeks in Mexico at an orphanage and another team for five weeks in China, teaching English at a youth summer camp.

International Service at a Glance

Trip	Participants	Length of trip
Summer '05		
Dominican Republic	11 students, 1 staff	2 weeks
Philippines	13 students, 2 staff	2 weeks
Japan	4 students	6 weeks
Chile	7 students, 1 faculty	8 weeks
Spring Break '06		
Northern Ireland	9 students, 1 staff	10 days
Belize	12 students, 1 faculty	9 days
Summer '06		
El Salvador	11 students, 2 staff	2 weeks
Albania	12 students, 2 staff	2 weeks
Mexico	5 students	2 weeks
China	7 students	2 weeks

Total hours of service and mission for Summer 2005 and Spring 2006 trips: **6,152 hours**

SERVICE TRIPS

NATIONAL SERVICE TRIPS CHANGE LIVES

During fall, J-term, and spring breaks, service ministry teams disperse across the United States. Participating students obtained a deeper understanding of servanthood and how to apply it in their daily lives. By engaging in these short-term, service-oriented trips, students have life-changing experiences as they become educated about the needs of others and discover the role service plays in society.



Stories presented by a Messiah volunteer captivate these children of Newark, NJ.

National Service and Mission Partners 2005–2006

Fellowship House, Camden, NJ
 Presbyterian Disaster Assistance, New Orleans, LA
 Reaching Urban Neighborhoods, Philadelphia, PA
 Rebuilding Northwest Florida, Pensacola, FL
 Serving with Appalachian People, Rural KY
 The Haft Ministry, Bradford County, PA
 The Rescue Mission, Syracuse, NY
 Urban Outreach, Washington, DC
 World Impact, Newark, NJ

International Service and Mission Partners (Spring/Summer 2006)

Bridge Builders, San Isidro, El Salvador
 Camp China, Hebei, China
 Forward Edge, Tirana, Albania
 Lurgan Church of the Nazarene, Lurgan, Northern Ireland
 Mission to the World, Acapulco, Mexico
 Mission to the World, Belize City, Belize

National Service At A Glance

Trip	Participants	Length of Trip
Fall Break '05 District of Columbia New Jersey Pennsylvania	30 students	4 days
J-Term Break '06 District of Columbia New Jersey Pennsylvania	27 students	4 days
Spring Break '06 District of Columbia Florida Kentucky Louisiana (2 trips) New Jersey (2 trips) New York Pennsylvania	88 students	8 days

"The hard work, *energy*, and heartfelt time that each team member *contributed* towards *helping* families in our area is truly appreciated. The lives and homes of the families the team assisted are in *better* condition today as a direct result of their *volunteer* efforts. The services rendered will not be forgotten by the families these service trips *assisted* nor the staff and administration."

—Mark A. Ramos, Director of Volunteers, Rebuilding Northwest Florida

Messiah students build bridges with children in Southeast D.C through play.



WORLD CHRISTIAN FELLOWSHIP

WORLD CHRISTIAN FELLOWSHIP ENGAGES STUDENTS' HEARTS

World Christian Fellowship at Messiah College is a student-led group that engages the hearts of students and the campus community with God's heart for missions. The goal of World Christian Fellowship is to increase believers' awareness of the world's physical and spiritual needs; equip students to make everyday choices reflecting that awareness; and to pray for the persecuted church and specific situations worldwide.

World Christian Fellowship Emphasizes Global Missions Through Several Ongoing Programs:

- **Salt and Light Chapels** are times of worship and praise that encourage participants to be salt and light in a world of darkness. Missionary speakers provide inspiration as they share their passion for the world.
- **The Ten Thousand Villages Christmas Sale** is an on-campus opportunity to purchase goods that provide fair income to individuals in the Third World who would otherwise be under- or unemployed.

World Christian Fellowship also Sponsors Special Events:

- **Mission Awareness Week** is marked by alternative chapels, luncheons, cultural dinners, and an international fair where more than 40 organizations provide mission updates and invitations for involvement.
- **Canoe-A-Thon** is a great way to help raise support for student summer mission trips as students, staff, and faculty canoe down the Yellow Breeches to the Susquehanna River.
- During the **30-Hour Famine**, members of the Messiah community join Christians around the world in World Vision's 30-Hour Famine, raising money for the starving people in the world.
- **Operation Christmas Child** provide Christmas gifts for international children who may otherwise not receive any gifts.

Messiah's World Christian Fellowship chapter is examining ways to become practically involved in the lives of students who are passionate for serving fulltime in cross-cultural missions. New initiatives include mentoring groups and an alternative chapel series each semester.



Participants in the Canoe-a-thon raise funds for student summer mission trips.

"As *director* of World Christian Fellowship (WCF) at Messiah, I have been privileged to *walk* with WCF through its programs and guide it as new programs are *developed* to fit our changing campus. Council members and I have a strong *passion* to bring missions closer to students in practical ways. We each have a *desire* to see Jesus worshipped in the *nations* and to be his hands and feet here on campus."

—Ian Holland '07, student director, World Christian Fellowship, Messiah College

MISSION AWARENESS WEEK

Mission Awareness Week is one of the ways that WCF connects students with God's heart for the world.

Each November, representatives from over 30 different mission organizations come to the Messiah College campus to connect with students and share with them testimonies of what God is doing in the world. Students get the opportunity to interact with different mission representatives in classrooms, chapels, seminars, cultural meals, and small groups across campus. M.A. Week has been a key time in many students' lives, encouraging them in their life-long callings as well as bringing awareness of God's heart for the entire world to the whole campus.

This past year, WCF had the opportunity to minister along side the Dorcus House, a women's ministry in northwestern India that helps women in need find healing, love, and restoration through Bible study and learning job skills. In Spring, WCF initiated the Himalayan Tapestry Sale, held in April, to raise money and awareness for the Dorcus House by selling clothing, stationary and other craft goods made by the women of the Dorcus House. All funds raised were sent back to India to support this national-led ministry."



Kevin Villegas spends time with a child in the Dominican Republic.

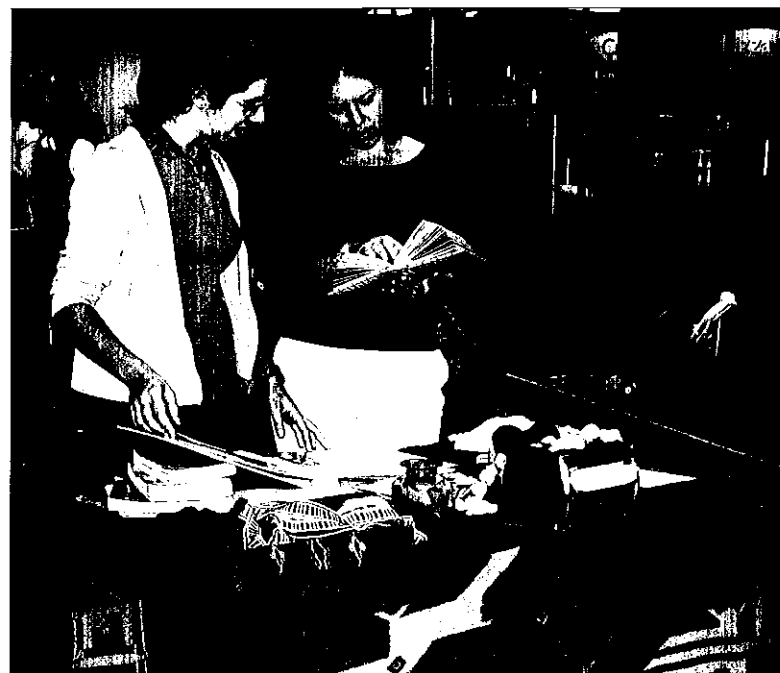


The Philippines team takes a time out to pose for a photo with their new friends.

"The Philippines team returned with amazing stories as they wrestled with reconciling the hospitality and warmth of the people they met with the incredible poverty they experienced."

—Director of National and International Service and Mission

Mission Awareness Week fall International Festival introduces the community to many unfamiliar cultures.



Michelle Carrier, the team's videographer, plays video footage for the amusement of some local village children.

DOKIMO I ERGATAI IMPLEMENTS PRACTICAL APPLICATIONS FOR TECHNOLOGY

Dokimoi Ergatai is a student organization committed to "learning through service and serving to learn." Collaborating with faculty and staff, student members of Dokimoi Ergatai focus on developing technology that has practical applications to address the physical needs of individuals in other countries. Dokimoi Ergatai seeks to:

- Foster lifelong commitments to Christian vocation and service through peer and advisor mentoring and discipleship to Christ.
- Integrate and enrich the academic and spiritual lives of students from all disciplines by making wise use of their skills to serve the underprivileged around the world.
- Demonstrate God's love by creating appropriate technologies that meet physical needs, while valuing the local culture.
- Develop long-term partnerships in the communities where it serves, while creating technologies that local people can use, maintain, and, when appropriate, replicate.

"I love using my skills in a practical way to serve others."

—Stephanie Kaplar '07, Water Purification Group

More than 80 students participated in Dokimoi Ergatai projects this year in Burkina Faso, Mozambique, and Honduras. Dokimoi Ergatai is composed of five student-led production groups.

- The **Water Access Group** consists of three teams: pumps, irrigation, and well-drilling. Tony Beers '06 led the installation of two irrigation systems in Burkina Faso and began testing his well-drilling prototype. The senior project team installed the final version of the Dokimoi Ergatai hand-pump in the summer of 2006 in Burkina Faso.
- The **Mobility Group** worked to improve both hand-powered and electric tricycles. Chad O'Toole '06 traveled to Burkina Faso to implement these improvements. The Mobility Group received funding from the World's Forgotten Children Foundation to build its first solar charging station for the electric tricycle in Burkina Faso. The Mobility and Energy Groups will collaborate on this endeavor next year.

continued on page 22



Members of the Mozambique team and African workers stand proudly in front of two of the three successfully installed solar panels. Team members include, from left to right: Joel Travis, Jon Shambeda, Heather Nicholson, Luke Witmer, Dave Enders, and Jon Patrick.



Two Burkinabe children race their hand-powered tricycles for excited onlookers during the summer of 2004.

“Dokimoi Ergatai provided me, a writer, with the *unique* opportunity to *work* alongside engineering and biology students in *servicing* the Lord.”

—Prasana William '08, Staff Group

Dokimoi Ergatai at a Glance

Water Access Group	13 students
Mobility Group	12 students
Energy Group	20 students
Staff Group	20 students
Water Purification Group	15 students
Total	80 students

Faculty Advisor: Dr. David Vader
 Office: Frey 253
 Phone: (717) 766-5216

Dokimoi Ergatai Trips

January Term 2006	Participants	Length of Trip
Burkina Faso	7 students, 2 faculty	22 days
Mozambique	9 students, 1 staff	27 days
Summer 2006		
Burkina Faso	7 students, 1 faculty	29 days
Honduras	3 students, 3 advisors	8 days

continued from page 21

- The **Energy Group** traveled to Mozambique over J-term for the group's largest solar panel installation to date. A new Bio-Diesel team was formed in the spring semester, incorporating progress made by previous senior project teams in the field.
- The **Staff Group** was streamlined this year and focused on clearly identified priorities. The Staff Group was streamlined this year and focused on clearly identified priorities. Some of those priorities were documenting projects through photography, video recordings, and written stories, fostering relationships with community by partnering with local churches and businesses, and analyzing trip finances.
- The **Water Purification Group** made great strides in its second year as part of Dokimoi Ergatai. The group was split into five sub-teams that focused on different projects and regions of the world: Africa, Central America, Western Asia, Education and Natural Sciences. The Water Purification Group is working to send teams to Honduras to build relationships with our contacts, visit villages and a clinic established by Medical Missions International, and gather data critical to developing and implementing water purification systems.

Dokimoi Ergatai anticipates another year of growth as it continues to develop new, high-profile projects such as bio-diesel, alternative fuel, and micro-enterprise initiatives. Dokimoi Ergatai continues to seek new advisors to come alongside students to assist in the development and implementation of projects. Advisors play a key role in sustaining the organization by helping the organization carry the mission and vision year after year and also by mentoring students. Priorities also include completing and implementing Dokimoi Ergatai's project management initiative and strengthening students' passion for the work through love, faith, and vision.

STUDENTS RESPOND TO HURRICANE KATRINA RELIEF EFFORTS

The Agapé Center has extensive experience in helping the Messiah community serve effectively by connecting with community agencies, organizing service teams, handling collections and offerings for various causes. When Hurricane Katrina ravaged the Gulf Coast, the Agapé Center was able to quickly mobilize a campuswide response by collaborating with many committed and compassionate members of the Messiah College community. The Katrina Response Committee identified five areas of focus for Messiah's response.

- Bring awareness and clarity to the situation by providing avenues in which the community can be clearly informed of what is happening in the affected area and offer clear communication on how the Messiah community can be involved in response.
- Facilitate prayer, meditation, and reflection by offering a space for individual and communal response.
- Help students process a response to disaster by providing avenues for lecture, conversation, and reflection about issues related to the specific disaster and appropriate response to disaster in general.
- Raise support for the cause by offering the Messiah community avenues for financial donation collection and distribution.
- Provide service opportunities by offering ways for the Messiah community to provide a hands-on response.

The work of the Katrina Response Committee and the participation of the Messiah community were tremendous. This endeavor provided a framework from which the Agapé Center can help provide an institutionalized response to disasters of this magnitude as part of its regular programming efforts.

Committee Members

Greg Anderson	(chair) Interim Director of the Agapé Center
Amy Merrill	Student Director of Service Trips
Mary Ann Hollinger	Dean of External Programs
Eldon Fry	College Pastor
Stef Moser	Student Prayer Coordinator/World Christian Fellowship representative
Tim Bogertman	Director of Issachar's Loft
Jeff Rioux	Director of the Larsen Union and Campus Activities
Becky Owen	Director of Local Community Service
Kate Bauer	Assistant Director of Local Community Service, Director of the Service and Learning Together House
Daniel Robles	Student Body Executive Vice President
Craig Dalen	Representing Residence Life and Life Groups
Rich Stevick	Representing faculty

Messiah Community Responds to Hurricane Relief Efforts

Funds raised (cash donations)

Chapel offerings	\$6,031
Institutional donation	\$10,000
Soccer game collection	\$775
James McBride CD sale	\$700
Issachar's Loft car wash	\$1,000
Health kits	\$250 plus kit contents
Fall 05 service trip	\$350
Christmas bead tree	\$1,052 plus presents
Flood buckets	\$75 plus bucket contents
Summer 2006 employee service trip	\$1408
Total	\$21,641 plus presents, and bucket and kit contents

Health kits	250
Presents	enough for 34 individuals
Beds	5
Flood buckets	48
People involved in service trips	45

KATRINA RESPONSE: SEPTEMBER–JUNE 2006

- Aug. 29–30 Hurricane Katrina occurred.
- Sept. 1 Special prayer time offered during chapel service.
- Sept. 1 and 6 Special chapel offerings to be donated to relief efforts
- Sept. 2 President Phipps offers a message of condolences and response and asks Greg Anderson of the Agapé Center to form an ad hoc committee to assist with Messiah's communal response.
- Sept. 3 Special offering collected at men's soccer game.
- Sept. 6 The ad hoc committee for relief and response met for the first time, established priorities, and organized an immediate and long-term response.
- Sept. 7 Messiah announced open enrollment for misplaced students.
Messiah announced an institutional donation of \$10,000 to aid in relief efforts.
Messiah announced an invitation to house a misplaced family in one of its Grantham residences.
A celebration of New Orleans culture, music, and food held in Larsen Student Union.
A 2-hour organized gathering in Hostetter Chapel for reflection and prayer.
James McBride, award-winning writer, composer, and saxophonist, came to campus to give a lecture and concert. He personally donated 140 of his CD's to be sold to raise funds for Hurricane Katrina victims. All CDs were sold out in a hour, raising a total of \$700.
- Sept. 17 Issachar's Loft held a carwash at Sovereign Bank on Rt. 15 to raise funds for donation.
- Sept. 21–Oct 6 Supplies were collected by residence halls and employees to construct health kits for donation to Mission Center, Mechanicsburg, to be delivered to the victims of Katrina. On October 6th a packing party was held in the Larsen Student Union with special music, food, and a reflective/educational Power Point presentation.
- Oct. 8 250 completed kits and many extra supplies were delivered to Mission Central.
- Oct. 16–23 Messiah sent a team of seven (three students, three faculty, one staff) to the affected Thibodaux, La., to learn about specific needs, gather personal stories to share with the campus, and assist in any way possible.
- Oct. 24 Naima Quarels-Burnley joined the Agape Center team to assist on special projects related to the Hurricane Katrina response.
- Dec. 7–Dec.17 Donations of gift-wrapped Christmas presents and funds (turned into store gift cards) related to specific expressed needs were collected to send to 34 displaced or otherwise affected families and individuals connected with the church and relief shelter the team served through in October. This included the purchase of five twin-sized beds from a local furniture store in Thibodaux for the families in need.
- Dec. 19 The presents were sent to Thibodaux.
- Dec. 21–Jan 3 A video was created by Sara Slack '07 consisting of pictures and video shot by the fall break team to be used in chapel.
- Jan. 9–Feb 6 The last big awareness and fund-raising push for the committee was a drive to collect flood buckets for donation to Mission Central to be sent to the affected areas for clean-up assistance.
- Jan. 10 Common chapel focused on more deeply understanding Hurricane Katrina and the need for response. Team members from the fall team shared in a panel and the fall break video was shown. Steps for practical, personal, and prayerful response were offered.
- Feb. 8 48 flood buckets and many extra supplies were taken to Mission Central as a result of the January efforts.
- March 4–12 Two student teams of 15 members each traveled to Louisiana and Mississippi to serve in the affected areas. One of the teams returned to the Thibodaux area where our partnering church was located. Another team of 12 traveled to Florida to assist with rebuilding efforts from the 2004 hurricane damages.
- June 14–23 Messiah sent a team of nine (employees and some family members) to serve in the Pascagoula, Mississippi area.

Barnabas Servant Leadership Award



Above: Eunice Aryee '06, Robert Barrett, and Lindsay Reilly '04.
Right: Mr. and Mrs. David Carlson.



The Barnabas Servant Leadership Award

is associated with the prestigious Barney II and Moore Foundations. The program serves as an effective instrument to the entire educational community by promoting the ideals of service that substantially benefits others.

This award was presented to two students, a Messiah employee, and an alumnus who have demonstrated the qualifications associated with the award:

- A high level of spiritual maturity and commitment to ministry and community service
- An integration of ministry and community service with academic work, faith, and sense of vocation
- The impact of the ministry and community service on the community served and the ability to work well with co-workers

Each recipient receives \$500 and a charity of her/his choice receives \$500 for a total of \$1000 per award.

Each year, candidates are nominated because they have demonstrated significant contributions in the areas of ministry, community service, and leadership. Listed in the next column are the recipients of the 2006 Barnabas Servant Leadership Award and a brief description about their volunteer commitments.

EUNICE ARYEE '06

CHARITY OF CHOICE: Youth for Christ International Ministries, *Specifically:* Ghana Youth for Christ

WHY SELECTED:

- Seek His Face Bible Study: worship leader, one on one discipleship, and prayer person
- Vice president for International Student and Missionary Kids
- Active member of Dokimoi Ergatai
- Teaches Sunday school and helps teach African Worship Dance at her local church
- Has served on service trip teams through the Agapé Center

LINDSAY REILLY '06

CHARITY OF CHOICE: SIM Handicap Center in Mahadaga

WHY SELECTED:

- Member of Dokimoi Ergatai for 4 years
- Former student director of Dokimoi Ergatai
- Team member for a solar energy system installation in January 2004
- Service trip team member to Chicago, Spring 2003
- Service trip team member to Ohio, Spring 2004

ROBERT BARRETT,

ASSISTANT PROFESSOR OF ENGINEERING AND MATHEMATICAL SCIENCES

CHARITY OF CHOICE: Operation Mobilization, George Verwer Special Projects

WHY SELECTED:

- Former advisor to World Christian Fellowship, started Mission Awareness Week and Mexico Christmas Crusades
- Organized and participates in 28 Canoe-athons to raise funds for summer missions
- Participated in student run mission trips to Nicaragua where they built a Bible school in Managua
- Faculty leader of a mission trip through the Agapé Center to the Dominican Republic to build a children's Center
- Advisor to Outdoor Club which ministers to Messiah students and others on the "trail or river"
- Spiritual leader and contractor for missions construction teams from his church, Christian Life Assembly

MR. AND MRS. DAVID CARLSON, '46

CHARITY OF CHOICE: Trans World Radio

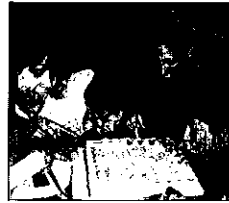
WHY SELECTED:

- For more than 40 years the Carlson's have been serving God through Trans World Radio (TWR)
- 1962 they first joined TWR in Monte Carlo, Monaco, where David served as assistant to the president and Florence as secretary and missions hostess.
- In their 40 years of service they have served in Monte Carlo, South Africa, and Swaziland
- 1986 they returned to the U.S. and have served as TWR representatives in the Midwest, East Coast, and the Southeast where David is the current representative.



Left: Rebecca Owen and Greg Anderson pack boxes for Katrina Christmas Bead Tree Relief. Middle: Known by New Orleans residents they helped as "The Warrior Women," the Messiah College team (pictured above) cleared three homes ravaged by Hurricane Katrina. Desiree Weaver '09 (back row, third from left) said their all-female work crew enjoyed being challenged to find creative ways to overcome obstacles. Right: Fall break employees and student service team members sort clothes in a drop center in Louisiana.

2005-2006 AGAPE CENTER CALENDAR OF EVENTS



August

- Fall Student Leader Training Week
- Into the Streets (fall orientation)



September

- Ice Cream Social (introduce service opportunities)
- Begin weekly local service for service-learning, Outreach Teams, and service for chapel credit participants



October

- Conco-a-thon
- Fall Break service trips
- Community Partner Appreciation



November

- Service and mission teams selected and begin meeting
- Mission Awareness Week



December

- Agapé student/staff Christmas party
- Wrap-up of local service, service for chapel credit, and service-learning for the semester
- Operation Christmas Child and Angel Tree

January

- Limited J-Term local service and service-learning
- J-Term break service trips
- Dr. Rev. Martin Luther King Jr. Community Engagement Day



February

- Begin weekly local service for service-learning, Outreach Teams, and service for chapel credit participants
- Agapé Center student/staff spring retreat



March

- Spring break service trips
- Spring break international service and mission teams CD sale



April

- 30-Hour Famine
- Orientation retreat for summer service and mission teams
- Service Day
- Ducky Derby



May

- Wrap-up of local service, service for chapel credit, and service-learning for the semester
- Community Partner Appreciation



June-August

- National faith-based service-learning conference
- International service and mission teams in service

BY THE NUMBERS

Stats and Successes 2005-2006

767	served on Into the Streets	26	countries served
752	served on Service Day	10	states served
724	volunteered for Special Olympics and other off-campus projects	32	local community partners
145	served on national service trips	778	students doing regular local community service
62	served on international service and mission this spring break and this summer (56 students/6 staff)	38	student leaders (WCF-9, service trips-6, Outreach-14, service and mission teams-9)
21	classes involving service-learning	6	work-study students
382	students in classes	50	to Jubilee
		52,134	total hours of service

Where we're *Going*

STAFF



Director
CHAD FREY
Full-time Messiah position



Assistant to the Director
PAT OLCOTT
Part-time
30 hrs/week



Faith Minnich
Part-time Summer
30 hrs/week



National and International Service and Mission Director
GREG ANDERSON
Coalition for Christian Outreach campus ministry partnership



Local Community Service Director
BECKY OWEN
Coalition for Christian Outreach campus ministry partnership

LOOKING TO THE FUTURE

Over the past two years, I have reflected on the vocational changes that occur as we grow together in our Christian faith. As the Lilly Grant Project Manager, I engaged in many campus-wide conversations about vocational development, not knowing how profoundly I would be affected by them today. Now, as I transition into the Agapé Center, I find myself often reflecting on these conversations as I begin to work out a new, and in many ways, renewed calling to service and learning.

I look forward to partnering with each of you in exploring our corporate call to service. As the new Director for Service-Learning, I anticipate developing new and creative ways to meet our educational objectives through service-learning and I invite you to consider the many ways that you might join us this year to celebrate our successes, reflect on areas that need improvement, and develop strategic plans for the future. Looking ahead, we hope to:

- Continue the strategic planning of the Faculty Dialogues Project toward a coherent and integrated interdisciplinary service-learning program;
- Increase the number of service-learning courses across the curriculum through new and existing partnerships and grant opportunities;
- Inaugurate the Service Scholars program to recognize faculty and student efforts in engaging the needs of the world through service-learning;
- Continue to foster committed and healthy relationships with community partners, applying the *Principals of Good Practice in Community Partner Relations*;
- Identify, assess, and support sustained volunteer programs through learning-guided community service in local, national, and international missions and Outreach contexts;
- Strengthen partnerships with departments across campus, as well as College-related centers and institutes to increase awareness, coordinate resources, and provide training/mentoring opportunities for student engagement;
- Embody excellence, hospitality, engagement, and hope in all training and programming initiatives;
- Continue our national and regional efforts to champion service-learning through student and faculty conferences.

Chad Frey
Director of the Agapé Center for Service and Learning



Agape Center

www.messiah.edu/external_programs/agape/

Service-Learning

www.messiah.edu/external_programs/agape/service_learning/

Service-Learning Conference

www.messiah.edu/external_programs/agape/national_conference/

Local Community Service

www.messiah.edu/external_programs/agape/local_service/

Into the Streets

www.messiah.edu/external_programs/agape/local_service/Into_the_Streets/

Service Day

www.messiah.edu/external_programs/agape/local_service/service_day/

SALT House

www.messiah.edu/external_programs/agape/housing_opportunities/salt.html

Outreach Teams

www.messiah.edu/external_programs/agape/local_service/outreach_teams/

National and International Service and Mission

www.messiah.edu/external_programs/agape/nism/

International Service and Mission Teams

www.messiah.edu/external_programs/agape/nism/service_and_mission/

Individual Mission Program

www.messiah.edu/external_programs/agape/nism/service_and_mission/individual/

Dokimoi Ergatai

www.messiah.edu/org/DE/

World Christian Fellowship

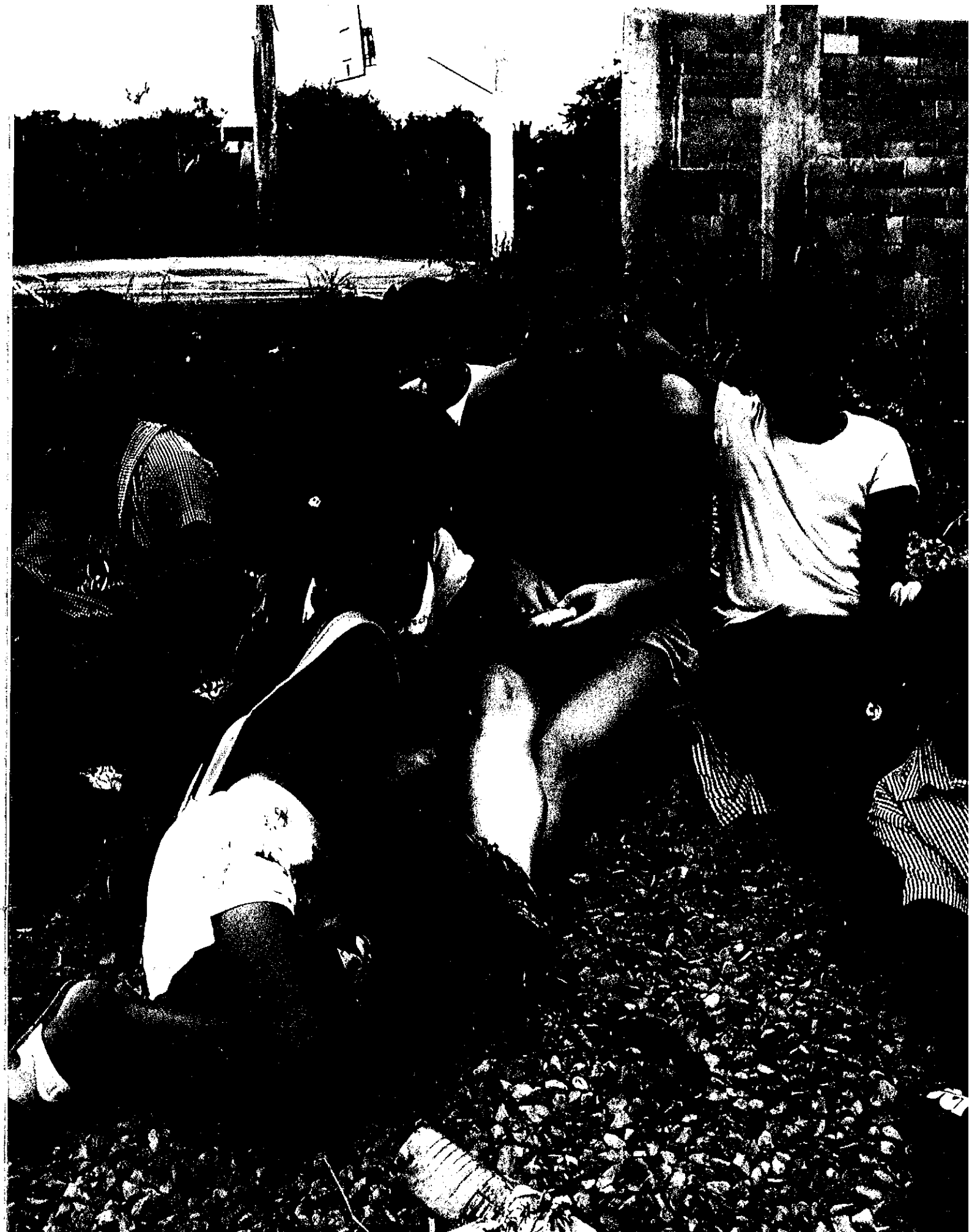
www.messiah.edu/external_programs/agape/nism/wcf/

Service Trips

www.messiah.edu/external_programs/agape/nism/service_trips/



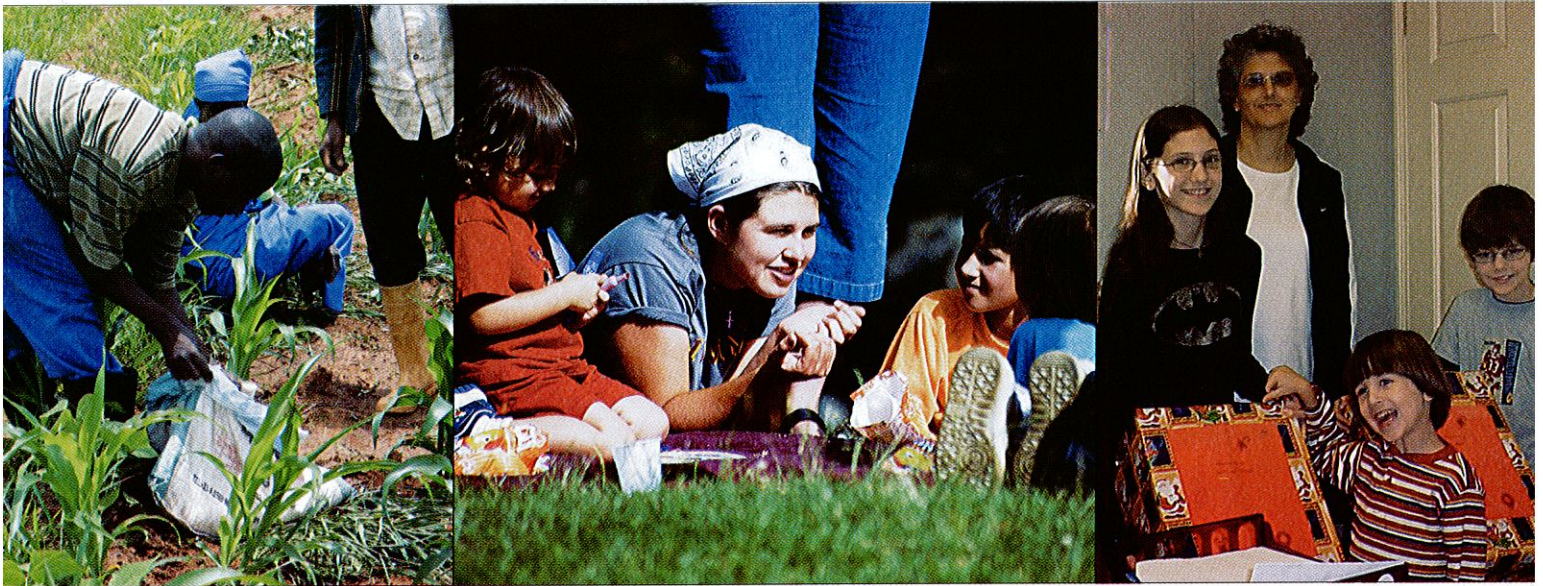
AGAPÉ CENTER





AGAPÉ CENTER

For Service And Learning



AGAPÉ CENTER

P.O. Box 3027
One College Avenue
Grantham, PA 17027
717.766.2511
www.messiah.edu