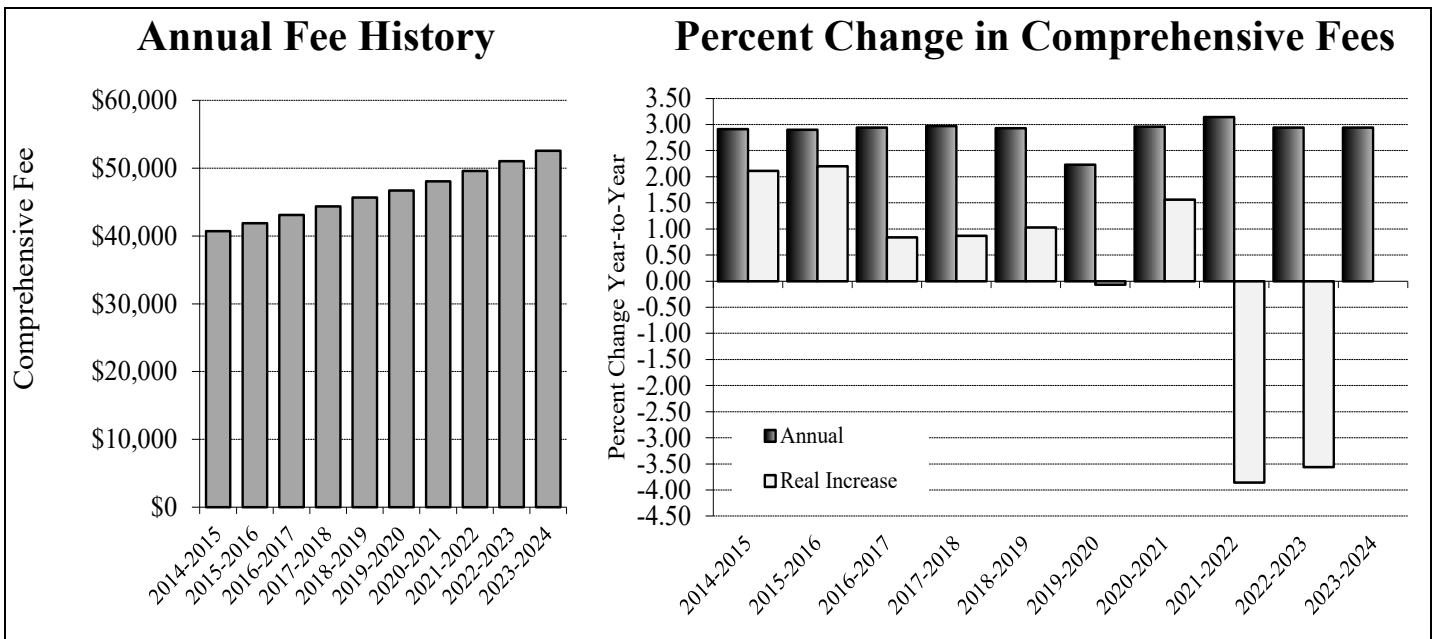


Undergraduate Semester Fees

	2014-15	% Incr.	2015-16	% Incr.	2016-17	% Incr.	2017-18	% Incr.	2018-19	% Incr.
Tuition	\$15,255	3.53%	\$15,705	2.90%	\$16,175	2.95%	\$16,660	2.99%	\$17,160	3.00%
Housing	\$2,475	3.45%	\$2,550	3.13%	\$2,625	3.03%	\$2,705	2.94%	\$2,785	3.05%
Food	\$2,200	3.64%	\$2,265	3.04%	\$2,335	2.95%	\$2,405	3.09%	\$2,475	3.00%
Fees	\$415	0.00%	\$415	1.22%	\$415	0.00%	\$420	0.00%	\$420	1.20%
Total	\$20,345	3.45%	\$20,935	2.91%	\$21,550	2.90%	\$22,190	2.94%	\$22,840	2.97%
Annual	\$40,690	3.45%	\$41,870	2.91%	\$43,100	2.90%	\$44,380	2.94%	\$45,680	2.97%
CPI Incr.	0.8%		0.7%		2.1%		2.1%		1.9%	
Real Incr.		1.95%		2.11%		2.20%		0.84%		0.87%

	2019-20	% Incr.	2020-21	% Incr.	2021-22	% Incr.	2022-23	% Incr.	2023-24	% Incr.
Tuition	\$17,640	3.00%	\$18,170	3.00%	\$18,715	3.00%	\$19,275	2.99%	\$19,850	2.98%
Housing	\$2,815	2.96%	\$2,900	3.02%	\$2,985	2.93%	\$3,075	3.02%	\$3,167	2.99%
Food	\$2,475	2.91%	\$2,550	3.03%	\$2,625	2.94%	\$2,705	3.05%	\$2,788	3.07%
Fees	\$420	0.00%	\$420	0.00%	\$470	11.90%	\$470	0.00%	\$470	0.00%
Total	\$23,350	2.93%	\$24,040	2.96%	\$24,795	3.14%	\$25,525	2.94%	\$26,275	2.94%
Annual	\$46,700	2.93%	\$48,080	2.96%	\$49,590	3.14%	\$51,050	2.94%	\$52,550	2.94%
CPI Incr.	2.3%		1.4%		7.0%		6.5%			
Real Incr.		0.63%		1.56%		-3.86%		-3.56%		



Sources: Semester Fees Sheet, Consumer Price Index (CPI): Bureau of Labor Statistics