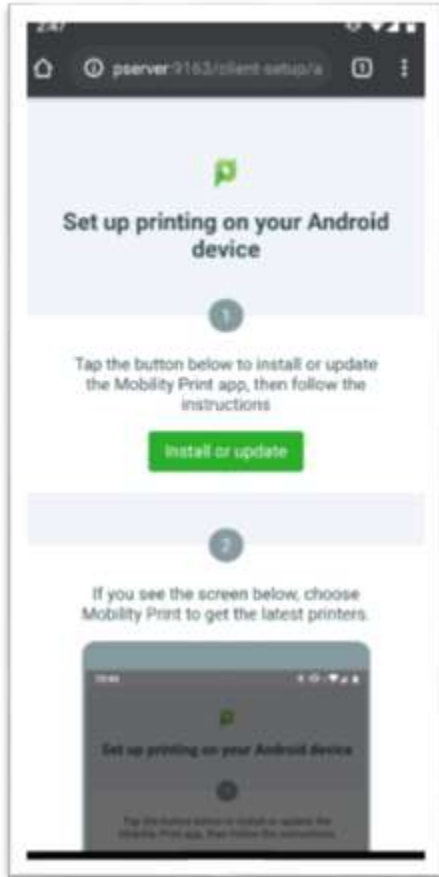


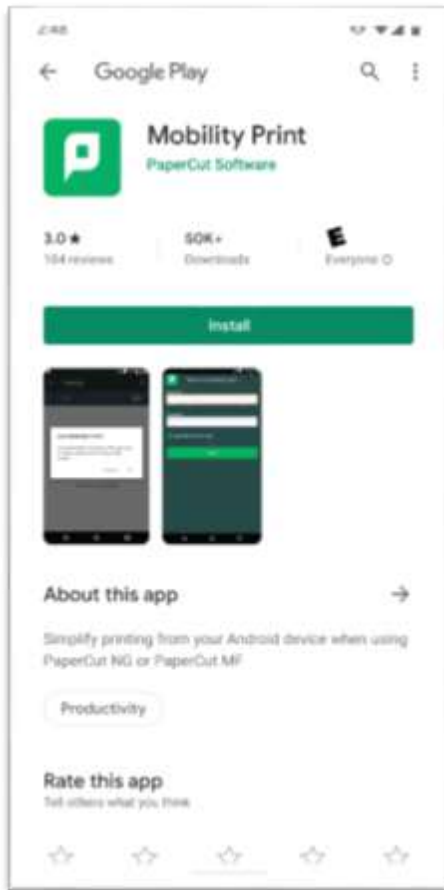
Mobility Print – Installation for Android

Follow the steps below in order to install Mobility Print on your personal Android device

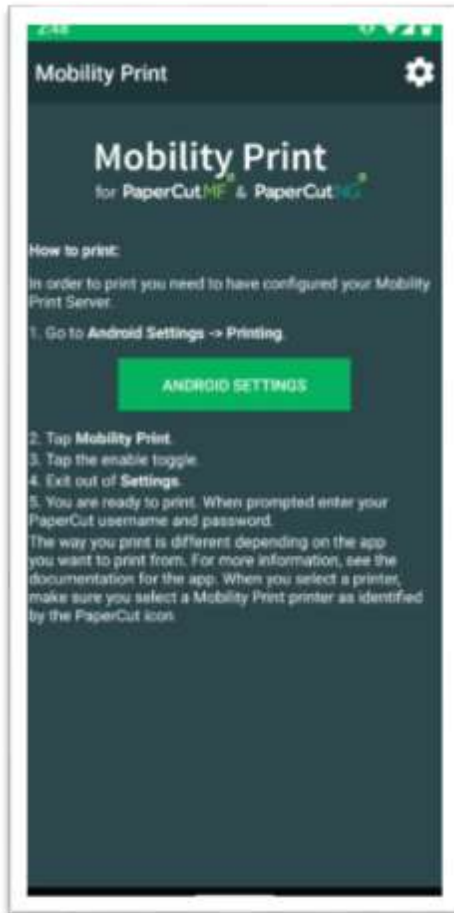
1. Go to <http://mobilityprint.messiah.edu> and tap the **Install or update** button



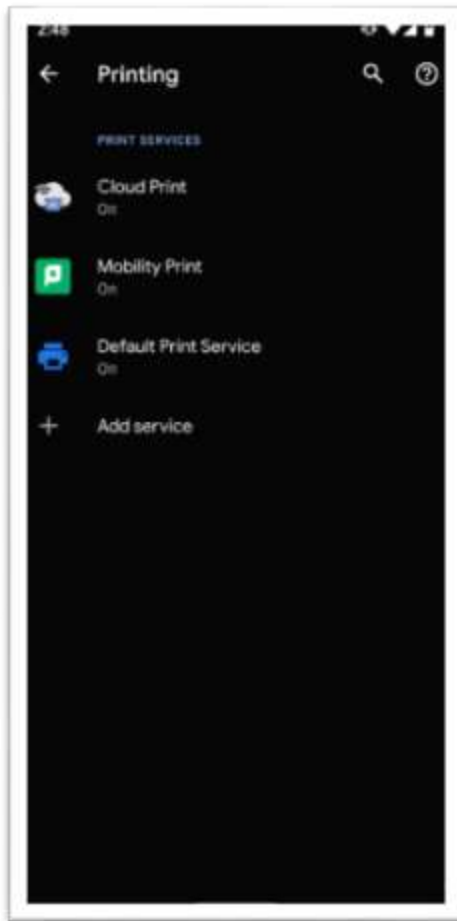
- You will then be redirected to the Play Store. Tap **Install** to finish installing Mobility Print.



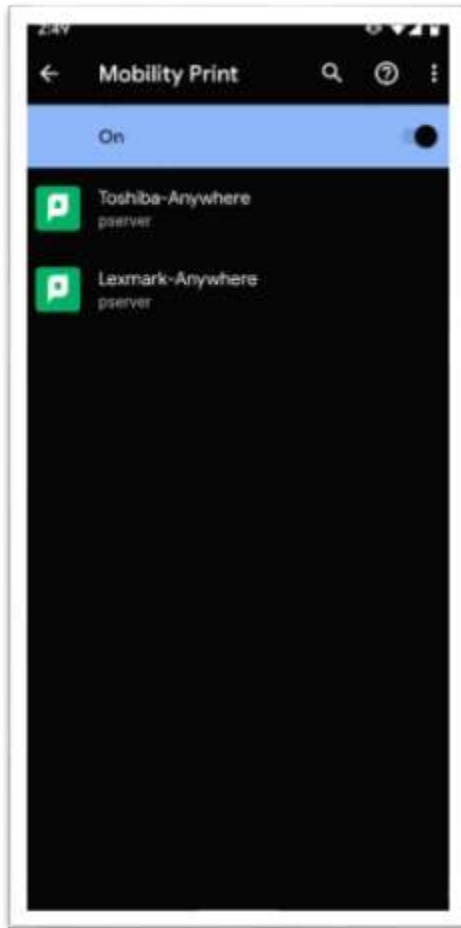
3. Open the Mobility Print app and follow the instructions given to enable Mobility Print.
 - a. Tap **Android Settings**



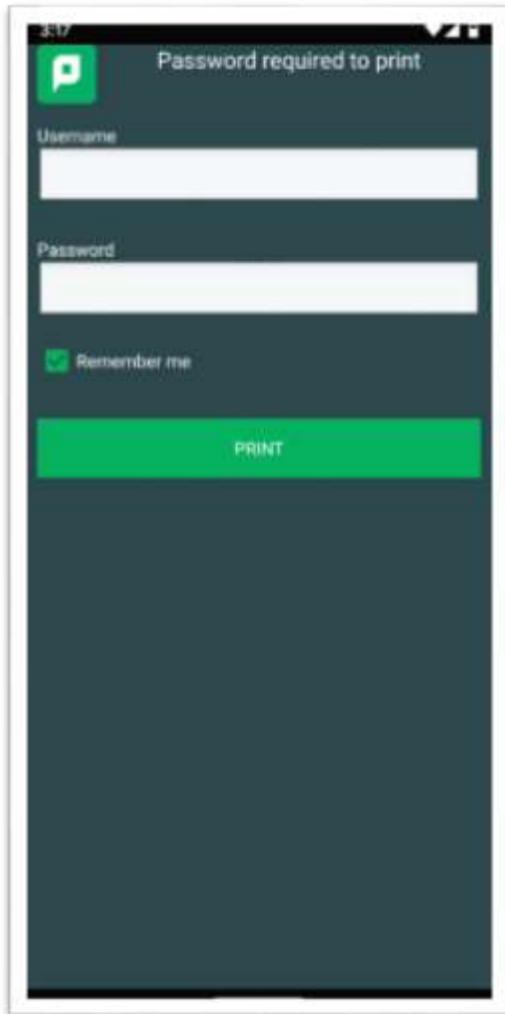
b. Tap **Mobility Print** from the list of Print Services



c. Switch Mobility Print to On



Once complete, you should see 2 printers (Toshiba-Anywhere & Lexmark-Anywhere) installed on your Android device that you can print to from any program. The first time you print, you will be prompted to enter your Name and Password for the printer. Enter your Messiah College username and password. Check the box to “Remember me” so you are not prompted again next time you print.



3:17

P Password required to print

Username

Password

Remember me

PRINT

You should then be able to go to a Toshiba or Lexmark printer and release the job you sent by swiping your ID card.